

SAINT MATTHEW'S CHURCH, IPSWICH.

BY THE REV. FRANCIS HASLEWOOD, F.S.A.

There are only thirty Churches in England dedicated to Saint Matthew, and this is the only one in Suffolk.

The church stands at the west end of the town, without the boundary of the ancient walls, and is situate in a large churchyard, handsomely planted. Owing to Mill Street having been cut out when formed, the church is almost hidden from view by the steep bank and walls on the western and southern sides.

The parish was formed in very early times, but is not found in Domesday Book, the survey ordered by William the Conqueror, 1086. The name of St. Matthew's parish is, however, mentioned about two centuries later, in Pope Nicholas's taxation, which was completed in 1291.* For a long time prior to this period the first-fruits and tenths of all ecclesiastical benefices had been paid to the see of Rome, but Pope Nicholas iv. granted the tenths to King Edward i., for six years, towards defraying the cost of an expedition to the Holy Land; and that they might be collected to their full value, a taxation was made, and completed at the period already named.

Though St. Matthew's is not mentioned in Domesday, it seems somewhat curious that among the ten churches of Ipswich, that of Saint George, a chapelry within the parish, should be named. It was a stone building of the early-English period, situate in Globe Lane, now called St. George's Street, and used for divine service as late as the middle of the sixteenth century, for Mr. Bilney was there apprehended for preaching the doctrines of the reformation. In 1610 the chapel was used as a barn, and finally destroyed by fire in 1764.

Mention is made of St. Matthew's parish in the "Testa de Nevill."† These ancient books were compiled in the reigns of Henry III. and Edward I., and give an account of churches in the gift of the king, and in whose hands

* *Taxatio Ecclesiastica Angliæ et Walliæ, auctoritate Papæ Nicolai iv., 1291.*
 Pub. 1802, p. 225.

† Pub. 1807, p. 285.

they were. This record mentions "the church of Saint Matthew, and the church of All Saints, in Ipswich," adding that they were in the gift of the king, and that John de Plessis was the parson, presented by the lord the king.

Though reliable information may be obtained in regard to the names of rectors, all pointing to the existence of a parish church, no records have yet been found giving very positive data respecting the fabric itself. A study of the architecture will alone enable us to fix any approximate dates; but as the church has undergone so many alterations, due to the increase in the population of the parish, and the enlarged accommodation thus rendered necessary in the building, it is a matter of difficulty. There is certainly nothing of a Norman character remaining. Traces of the Decorated style of architecture may be observed, but that belonging to the Perpendicular period preponderates.

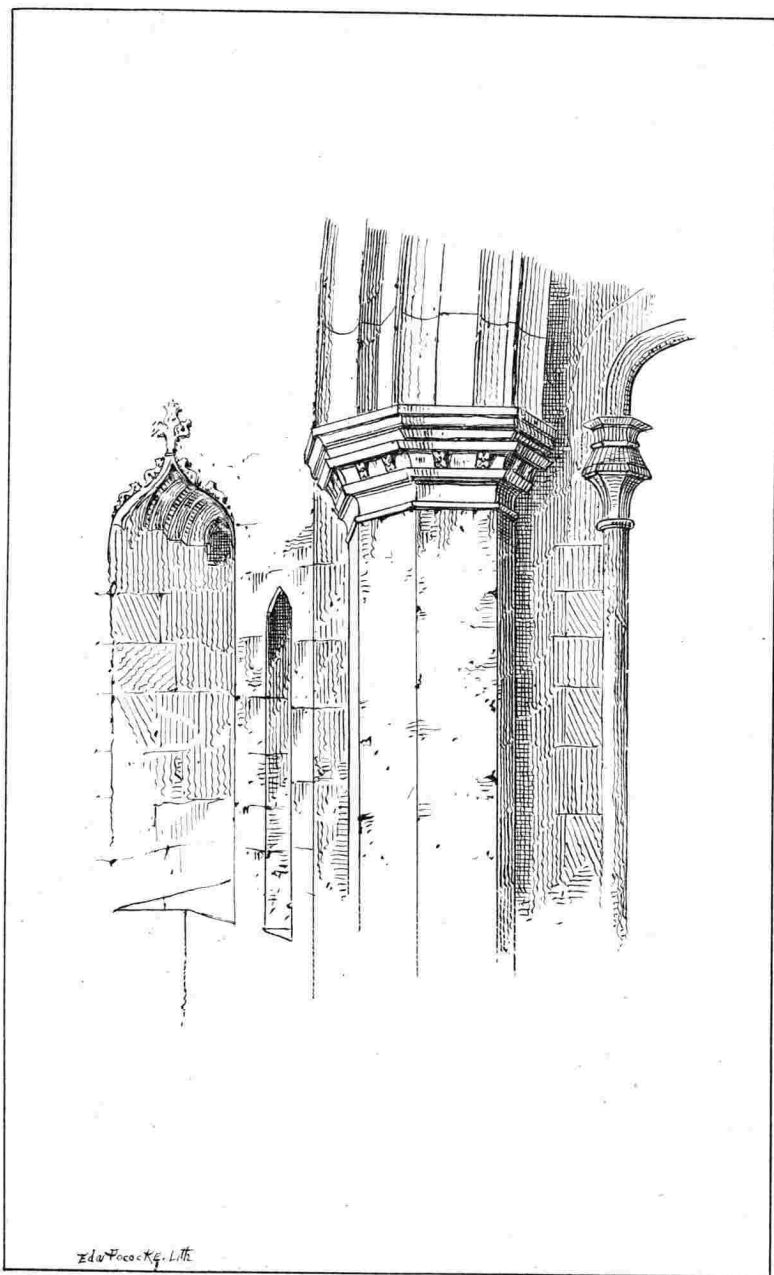
The church is constructed chiefly of flint and rubble, with red brick, which is largely employed in the tower, and also sparsely inserted in that portion of the original north aisle still remaining.

The fabric consists of a chancel, with south aisle, and north organ chamber opening into the north aisle; a nave, with north and south aisles; a small porch on the south side, leading into the chancel aisle; a vestry on the north of the chancel, and a square tower at the west end of the nave.

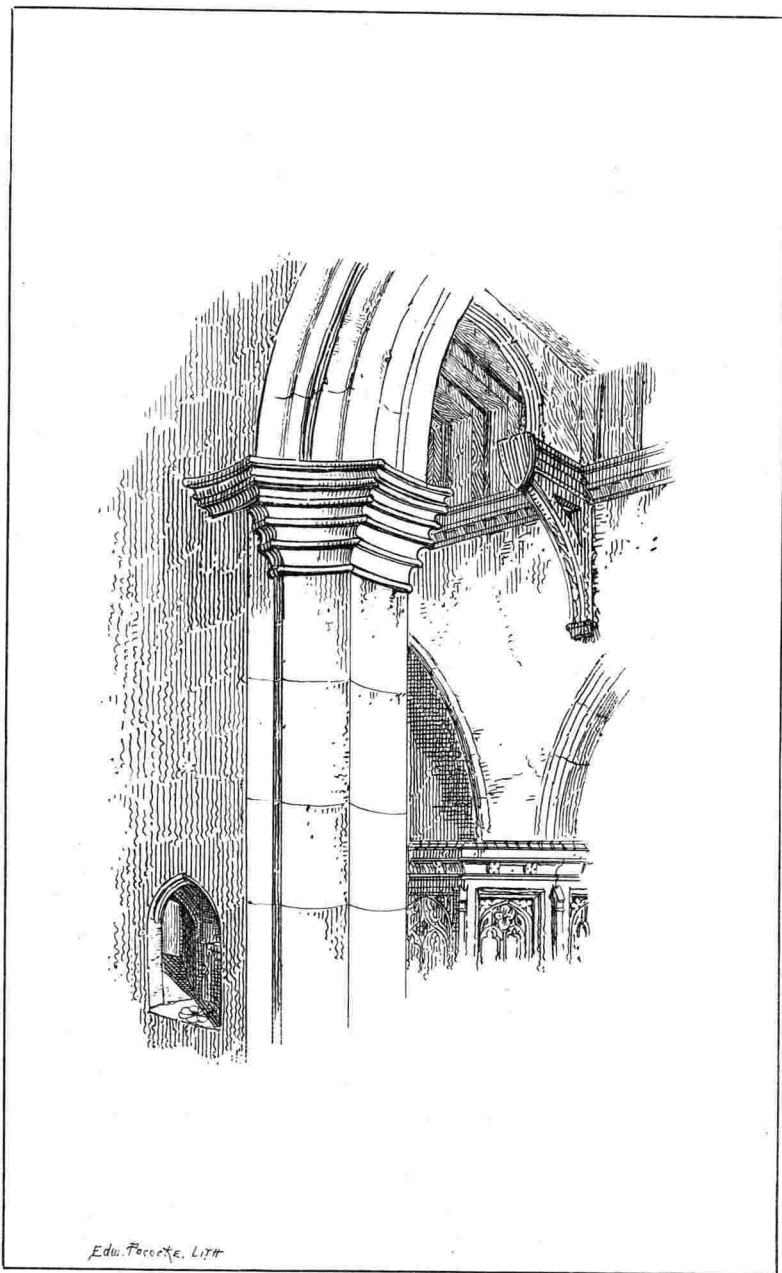
CHANCEL.

It is believed that the chancel arch is the most ancient portion of the fabric, its style indicating work of the 14th century, and leading to the conclusion that it was erected during the reign of Edward III. This King was one of the three who reigned more than half a century; the period during which he sat on the throne being from 1327 to 1377. Though simple, the chancel arch is good, the columns, however, are not perpendicular, the result of a settlement. The hammer beam roof is a little later, probably of the reign of Richard II.

Within the altar rails may be observed in the north



S.E. RESPOND OF NAVE, S. MATTHEW, IPSWICH.



N E. RESPOND OF NAVE, S. MATTHEW, IPSWICH.

wall traces of an old door. This was, probably, the entrance into a former vestry.

In the autumn of 1866, the chancel having become dilapidated, was repaired by the Lay Rector, the east wall being taken down and rebuilt, and roof stripped. At this period the space within the altar rails was increased in depth; to admit of this the vestry door was blocked up, and a new one opened in the east wall of the old north aisle. At the same time a trefoil-headed credence-table was inserted in the north wall. The pulpit was also reduced in height and set back eastward, and the wall pierced on the north side of the chancel arch. Memorial tablets formerly on the eastern wall were at the same time removed into the south chancel.

NAVE.

The Nave is divided from the north and south aisles by an arcade of four arches on each side. The columns are octagonal: those on the north side are concave in form, with capitals plainly moulded. Those on the south side have the capitals ornamented with small square flowers, corresponding in design with those around the piscina in the chancel aisle. The south arcade has been attributed to the reign of Edward III. or about 1350, that on the north side to the time of Henry VII. It is difficult to assign dates to the more ancient portions of the church, owing to the lack of documentary evidence. Here, however, it may be stated that by the Will of Richard Fleg, proved in the Ipswich Registry, 1439, a bequest of ten shillings was made to the High Altar for tithes forgotten, and also to the fabric of the Church; whilst one Edmund Bercock, in 1444, desires to be buried in the parish church of St. Matthew, near the font.

In the north-east angle of the nave, behind the spot where the pulpit now stands, may be observed an uneven surface in the wall, clearly indicating that the staircase to the ancient rood-loft must have been here, where indeed it is generally found.

From traces of the old weather-mold still visible on the east wall of the tower, it is evident that the ancient roof of the nave was of greater pitch than the present one. It was doubtless open and of handsome construction, with hammer beams carrying angels with shields, on which were carved emblems of our Lord's passion. Though this church, in common with others, was greatly despoiled in the reign of Edward VI., and in the beginning of the reign of Queen Elizabeth, when general orders were issued to pull down, and cast out of all churches—roods and superstitious images; it was reserved for the hands of William Dowsing, the Parliamentary Visitor, to complete the work of spoliation, and demolish all crucifixes, crosses, and images, in all churches in Suffolk. On January 29th, 1643, the Puritan invader visited Saint Matthew's, and records in his Journal that—"We brake down 35 superstitious Pictures, 3 Angels with Stars on their breasts, and crosses." Possibly the angels referred to served to adorn the ancient roof, and were in design similar to the corbels in the north and south aisles.

In 1843 the nave roof being considered unsafe, was destroyed; at the same time the building underwent great alterations, the work being undertaken in the autumn of that year, when the present roof was erected and walls of the nave heightened to form a clerestory. Over the four arches of the nave are as many small square-headed Perpendicular windows of two lights. The roof is mainly of plaster, divided in compartments, and poor in the extreme; the timbers are slender, having moulded tie beams and supports.

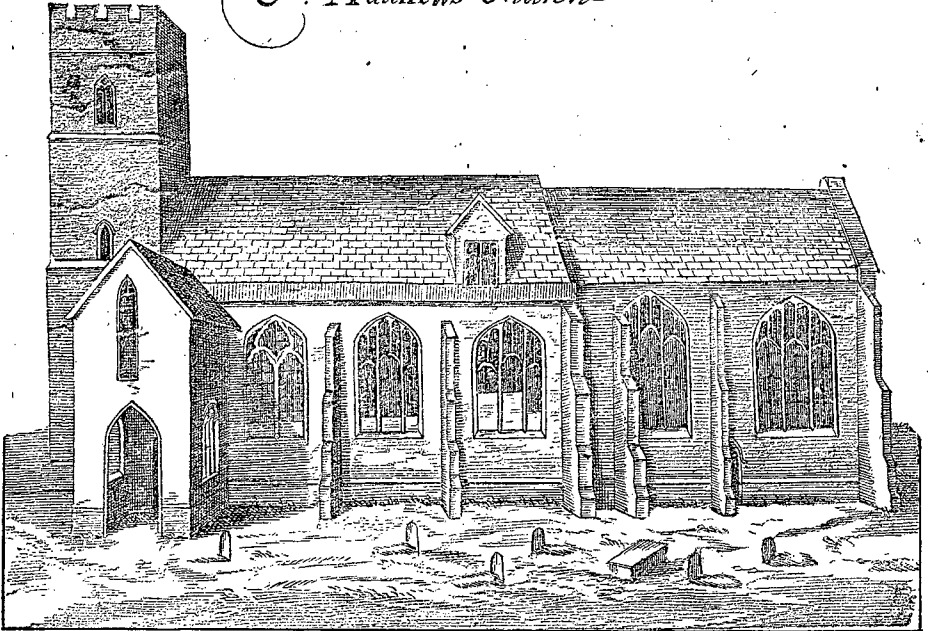
In the west wall is an opening from the tower into the roof, which is closed by a wooden shutter, and serves as a ventilator when required. This aperture, previously bricked up and plastered over, was made available for use during the extensive alterations effected in 1877.

A gallery (a smaller one was erected in 1828), extends across the whole length of the west end, concealing an arch of considerable merit, leading into the tower.

SOUTH AISLE.

The alterations of the fabric effected on the south side have been so numerous, that its appearance in the nineteenth century differs so widely from what it was in the seventeenth, that scarcely any one would recognise it as the same building.

*The South Prospect of
St. Matthews Church*



SAINT MATTHEW'S CHURCH, IPSWICH. SOUTH SIDE. 1698.

The earliest view of the edifice is to be found among the rest of the churches which surround an old map of the borough of Ipswich, "actually surveyed and delineated an^o 1674; by John Ogilby, Esq., his Majesty's Cosmographer; and exactly engraved by Thomas Stuvard an^o 1698, and offered for sale at his house in Brook Street, Ipswich."

"The South Prospect of St. Matthew's Church" in 1698 had two three-light Perpendicular windows in the chancel, with a slender buttress and small door eastward of the latter, between the two windows.

There was an open porch, with windows east and west, at the west end of the south aisle. Over the door was a long narrow window, suggesting the idea that there was a small room over the porch, the pitch of which rose above the wall-plate of the south aisle. The churchwardens' book for 1596 contains this entry :

"Payd for a bar, a lock, and an iron Boulte for the portch dore. xd."

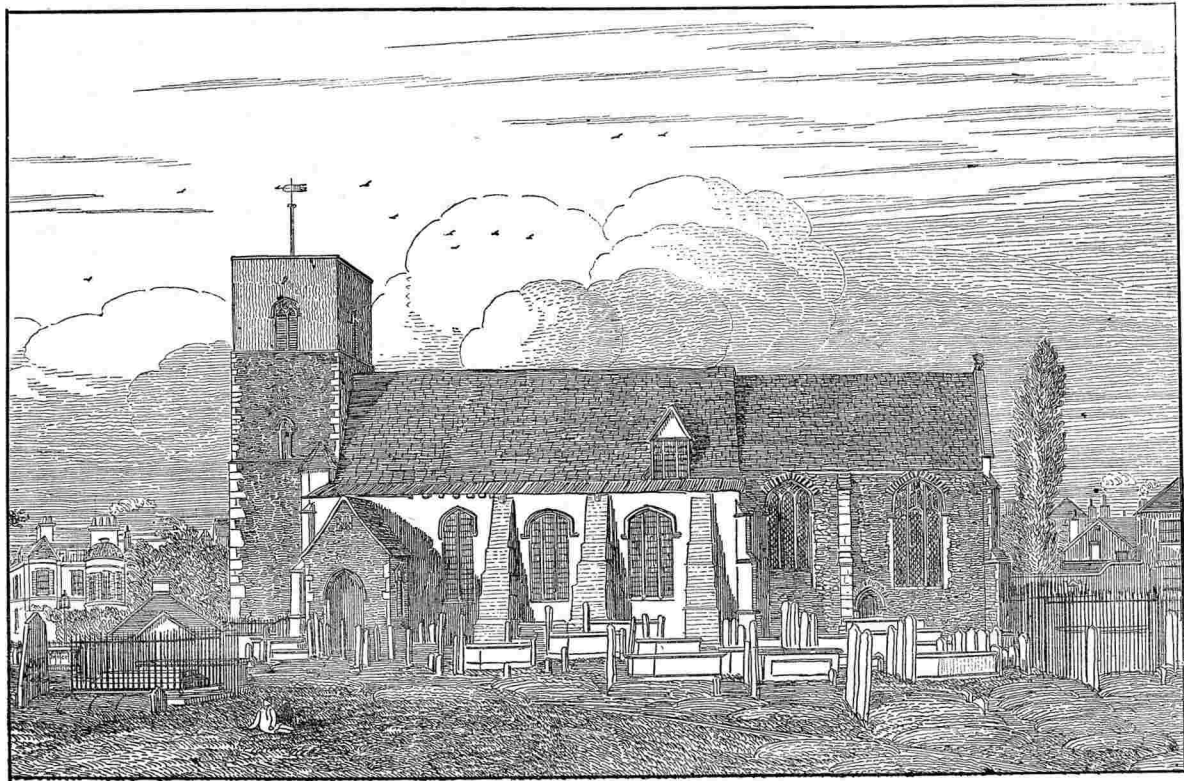
The most western of the three windows was a Decorated one of two lights; the other two were Perpendicular in character, and of three lights. The three windows were apparently built up and plastered over in the lower portions.

Lead covered the south aisle, the nave and chancel being probably covered with shingles. There was a dormer window of two lights, locally called a "lukcom," both on the south and north sides, in the eastern part of the roof of the nave. We find this entry in the churchwardens' book :

"1628. to a carpenter for lyninge the spars and putinge s. d.
a new sparr over the lukcom iij. vj."

The buttresses of the south aisle were, like those of the chancel, remarkably slight and narrow. The tower at this period was not plastered, but surmounted by a parapet with four battlements on each side. There was then no flag-staff.

The next view of the south side of Saint Matthew's church is likewise an engraving, drawn and etched by Henry Davy, of Globe Street, Ipswich, and published February 1st, 1841. The Rector at this period was Rev. Robert Jervis Coke Alderson, A.M.; the lay Rector being William Charles Fonnereau, Esq. This view clearly indicates that several changes had been effected since 1698: the tower plastered over in the upper stage, and finished with a flat shallow parapet, in place of the ancient merlons and embrasures; and a flag-staff with weather-cock erected.



SAINT MATTHEW'S CHURCH, IPSWICH. SOUTH SIDE. 1841.

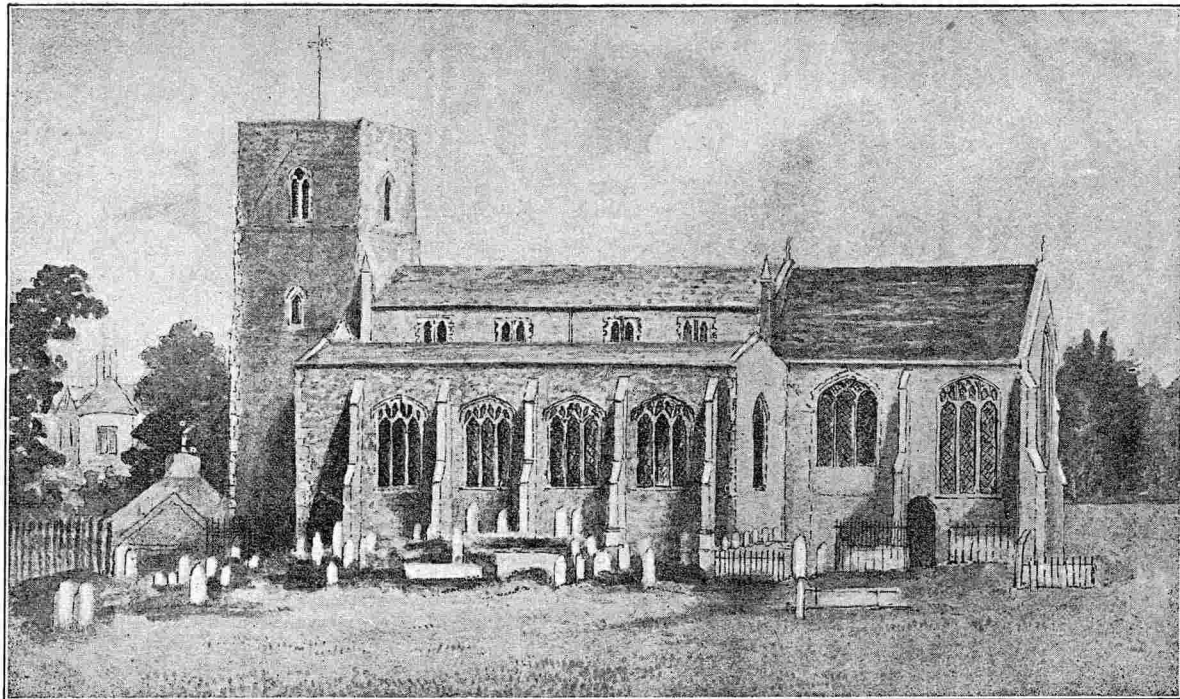
The south porch had been reduced in height, so that the ridge now came beneath that of the south aisle, and instead of the long narrow window a piece of groined stone was inserted over the entrance, which was at this period provided with an outer door. This entry is found 1602 :

“Pd. for a lock for the church portche to keep out horses. iiijd.”

Three very massive buttresses, more than double the thickness of the former ones, supported the south wall, which at that time was evidently plastered over, suggesting the idea that the wall was deemed insufficiently strong. The windows also were materially altered, the old tracery being replaced by plain upright wooden mullions. The dormer or lucarne window in the nave remained as before, except that it contained three lights, instead of two, as formerly.

The chancel windows may have been slightly altered. The small door remained intact, but some kind of ornament, either a finial or a cross, was affixed to the east gable.

In 1844, great alterations of the church were effected, particularly in the southern front. Not only was the old roof of the nave replaced by a new one, and walls heightened to admit the four present clerestory windows on either side, but the fabric was enlarged by widening the south aisle. This work was undertaken whilst the repairs to the nave were in progress. The porch and three massive buttresses were removed, and the pillars, formerly out of the perpendicular, were placed upright. Lead, which formerly roofed this aisle, was replaced by slates, with which also the present nave was now covered. When these alterations were made, a three-light perpendicular window, of poor character, was inserted both at the east and west ends of the south aisle. The elevation then presented four three-light perpendicular windows, and two in the chancel, the lower portion of one of them being partially built up, probably for some memorial tablet. A water-colour drawing exists, representing the southern



SAINT MATTHEW'S CHURCH, IPSWICH. SOUTH SIDE. 1844.

façade, prior to the erection of the south chancel aisle: the five buttresses were exceedingly slender, accounting for the repairs which became subsequently necessary.

SOUTH CHANCEL.

In 1860 the church was further enlarged by the south aisle being extended eastwards in a line with the high chancel, and connected with it by two arches: another of a depressed character separating the south aisle from that of the chancel.

By this extension two windows and three buttresses were added, the east window being re-inserted.

The removal of the south wall of the chancel rendered it necessary to disturb a Piscina, which was placed in the east wall of the south chancel. Originally there was a stone shelf within this piscina; the bason, however, remains perfect. The piscina is ornamented with small square flowers, like those on the capitals of the nave on the south side. It measures 32 inches in height, and 21 inches in width, and at present stands 4 feet 8 inches from the ground.

When the south chancel was erected a small door was removed. It now forms the entrance to the vestry.

The porch was added in December, 1860: the external door faces east, but the entrance into the church is in a line with the original position.

The new roof is the best feature, being of pitch pine, and well carved. The tie beams are supported by corbels with carved angels.

The present pulpit was provided at the same period (the first mention of one is in 1591), it is of oak, and stands on a stone base.

Owing to the thickness of the piers to the chancel arch, openings were cut through them in three directions, to enable the congregation to see the preacher: At this time, also, the organ was removed from the gallery to the east end of the north aisle, the floor paved with red

and black tiles, and the altar rails and gas standards of brass were supplied. Gas was first introduced in 1850. The cost of the foregoing work was £1,094.



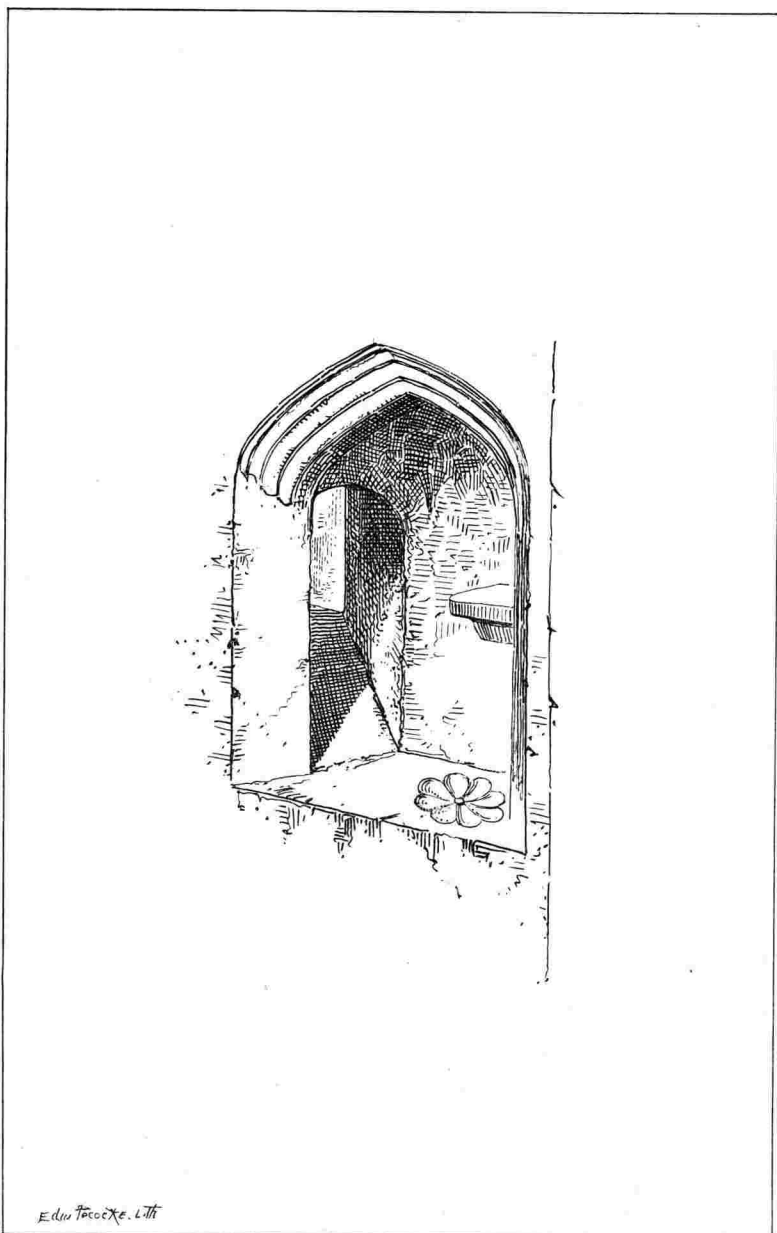
SAINT MATTHEW'S CHURCH, IPSWICH. SOUTH-EAST. 1884.

A great alteration as regards appearance was effected in 1884, when the roof of the south aisle, erected in 1844, was pronounced unsafe. The wall was therefore refaced with black flint. This work, together with four entirely new windows of a more pointed character, and the re-erection of five new buttresses with inlaid work, greatly enhanced the beauty of the southern front. The church was re-opened November 4th, 1884: the cost having been £1,085.

NORTH AISLE.

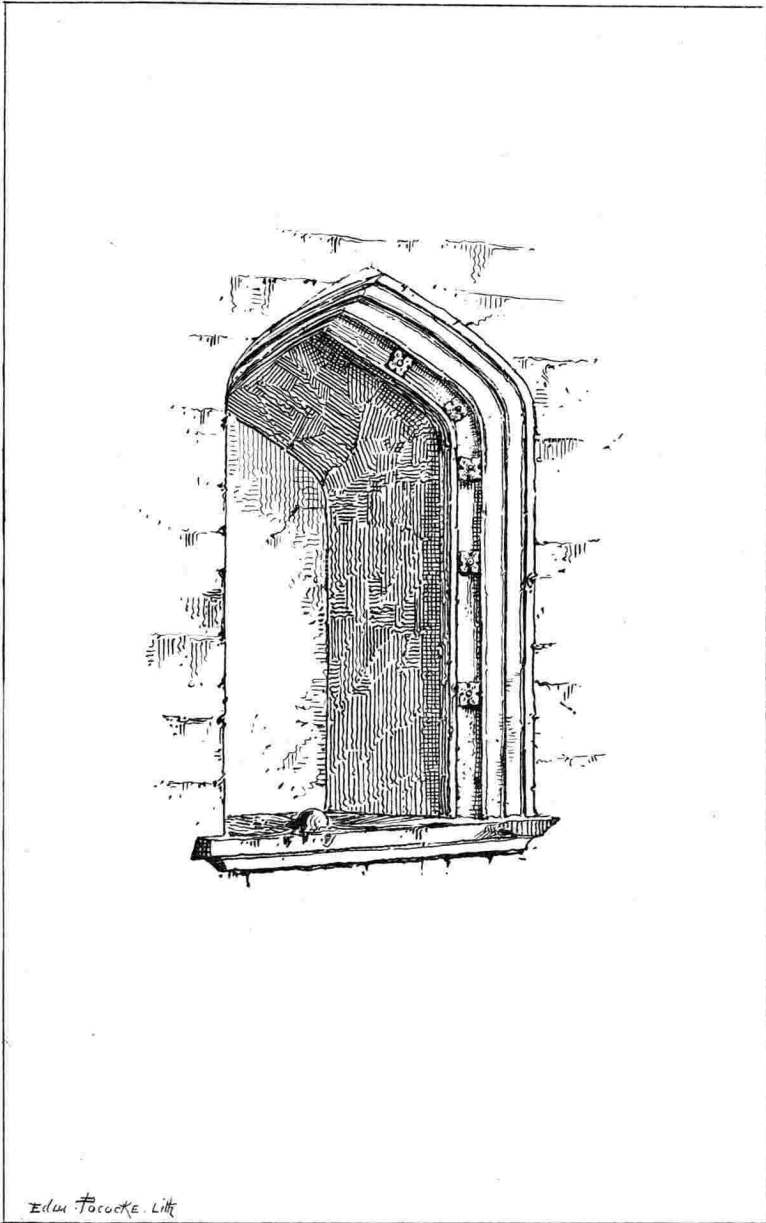
Prior to 1877 the north aisle extended eastward as far as the vestry, and terminated at the tower. The enlargement was obtained by widening the aisle to correspond with that on the south side, and extending it westward. A large five-light window was at this time inserted, replacing a small one of two-lights separated by a wooden mullion, whilst at the east end two new arches were constructed. Four new buttresses were built after the old design, and three Perpendicular windows re-inserted. The old roof was a plain lean-to construction without battlements, covered with lead and internally divided into panels by moulded rafters of oak, and plastered in the compartments. A portion of the original roof remains over the organ chamber. The present roof is of oak. The wooden corbels carved with angels and human heads, which formed the brackets of the old roof, have been preserved. Their date may be about the fifteenth century. Various materials are employed in the roofing of the present church; thus upon the chancel are tiles, on the nave and south aisles slates, over the organ chamber and tower lead, whilst the north aisle is covered with zinc.

The north door was in a line with its present position. This was and still remains the chief feature on the north side, being in the Perpendicular style, with square-headed moulding characteristic of the period; the date being about the middle of the fifteenth century. The jambs are ornamented with crowns, square flowers, and roses with shields appended. At the termination of the moulding on either side is a lion, carved in a style similar to several found in other churches in the town. These lions are guardant and sejant, with the fore legs elevated, and tails erect. The old door was re-erected, each stone being marked for the purpose. The original wooden doors were replaced by others of oak after the old design.



Edw Pococke. Lith

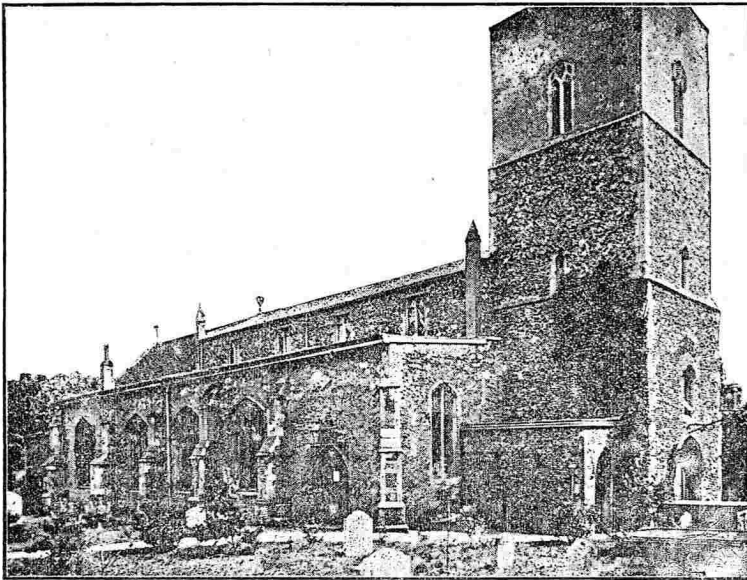
SQUINT AND PISCINA, N. AISLE, S. MATTHEW, IFSWICH.



PISCINA IN E. WALL OF S. CHANCEL, S. MATTHEW, IPSWICH.

In the north pier of the chancel arch is an oblique piercing, which also penetrates a piscina. The height of the Hagioscope is 20 inches, and width $6\frac{1}{2}$ inches, the whole thickness of the pier, measured diagonally, is 4 feet 5 inches. The Piscina is 3 feet $4\frac{1}{2}$ inches from the ground, 25 inches high, 18 inches wide, and $9\frac{1}{2}$ inches deep.

There is in the sill of the opening the usual shallow bason, in the form of an octofoil sinking, with a central ring of eight perforations. It contains a small stone shelf for holding the pair of cruets. Perhaps this north chapel was dedicated to Saint Erasmus.



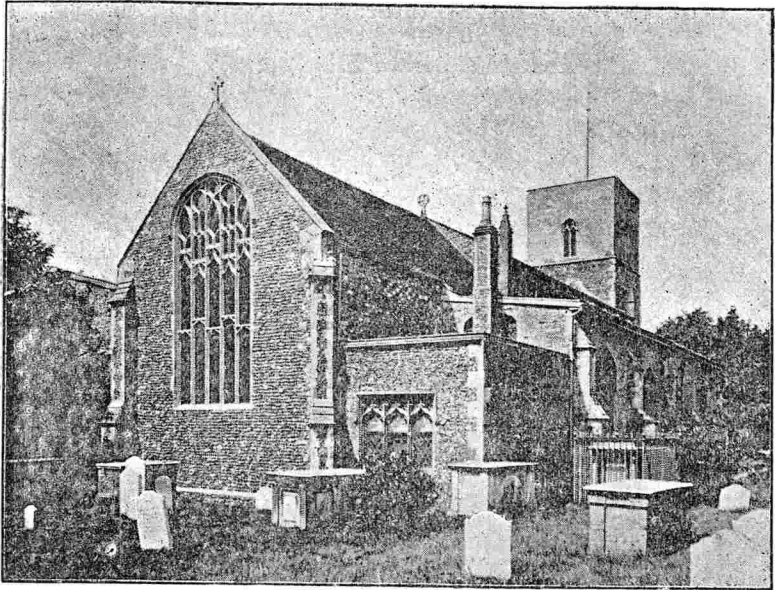
SAINT MATTHEW'S CHURCH, IPSWICH. NORTH-WEST.
PRIOR TO 1876.

The enlargement of the north aisle was commenced in the autumn of 1876. The total cost was £1,452. In digging the foundations, traces of an old porch, measuring 8 feet in length, and 6 feet in width, were discovered, a

fact borne out by this entry in the Churchwardens' Book :
1596, for certain peces and sparres wth workmanship for the northe
porche ijs viij^d

At the west end of the old north aisle, and occupying the space now filled by the Baptistry, was a tool-house built of stone, erected in 1845.

VESTRY.



SAINT MATTHEW'S CHURCH, IPSWICH. NORTH-EAST. 1876.

The vestry, abutting on the chancel on the north side was erected in 1845. The chimney blocks up a three-light window, with brick mullions, which formerly existed in the east wall of the north aisle.

A vestry is first mentioned in the Churchwardens' Book, thus :

1578 pd to daubeney ffor certeine timber & mendinge the vestry viijs

Then for some reason the vestry appears to have been pulled down, because the entry occurs :

xii June 1586 Whereas the Inhabitants of this pische of St Mathewes have lately defrayed great somes of mouye, by reason of the povertie of some & unwyllingness of others, agreed the vesterie sytuate at the north syde of the Chauncell shall be solde for xxii. 1586 payde as pcell of the averages for the parsonage, more than the vestrie was sold for £.iij x^s

TOWER.

The tower, formerly poor and mean in appearance, having lost its original battlements, and been plastered in the upper stage, is supposed to have been erected during the reign of Henry iv., about the year 1400, but the date was probably earlier. It may be architecturally described as of the Transition period, between the late Decorated and early Perpendicular styles. The tracery of the belfry windows is elegant, they have a stone mullion with a quatrefoil above. It is built in three stages, and without buttresses, a feature by no means uncommon in Suffolk churches. As to its history, we have no certain data, but Wodderspoon states that four bells were hanging in the steeple in the reign of Edward vi.

The first allusion to it in the Churchwardens' Books is found thus :

1574 To Grene for makeing clene the battelments.

The massive nature of the structure exhibits the generous liberality of the early ages, and in consequence of its stability but few repairs have been necessary ever since its erection. We find, however, the following particulars :

1578 ye Repayering of the Steple

1579 Itm paid to Jerime Jeames for new gysse (joist) for the steple

vjs

Itm paid to Mr Harris for two hundrethe and a halfe, and xiiij foote of vnche boorde for the steple

xvijs

iijd

paid for helping the lead up on to the stepell

vjd

1579 paid to palmer for shootyng (casting) of xix hundredth and a half of olde lead at iijs a hundredth	-	-	-	lvij ^s	vj ^d
more for iiij hundredth of newe lead at xvij ^s vj ^d a hundredth	-	-	-	liij ^s	
for brodheaded naylle for to naylle the lead on the steple	-	-	-		xv ^d
for two fagoots of woode to heat the yorens (irons)	-	-	-		ij ^d

The two lower stages are built battered inwards as much as three or four inches in the height of each, which of course adds greatly to strength of the tower, but the walls of the uppermost stage are upright.

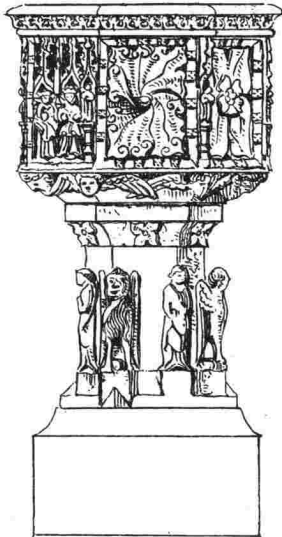
The Bells, five in number; were formerly rung from the middle stage. The staircase turret was probably added in the sixteenth century.

Doubtless, originally, an interesting window existed above the poor and modern west door, the present window having been inserted in its place at the time of the erection of the south aisle, though the arch and inner jambs are left intact.

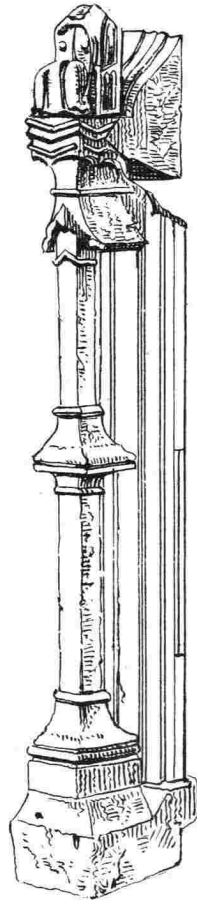
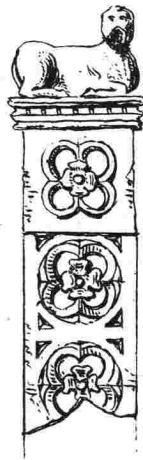
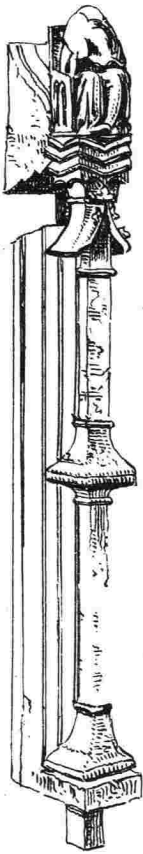
The west door, cut through the tower in 1844, now forms the main entrance to the church, and took the place of the ancient south porch and door. When this work was done the joists and floor of the belfry were raised two feet, and the floor laid with pammets, the folding doors with skylight over being added.

In 1884, the plaster which formerly covered the upper stage was hacked off, and the tower thoroughly restored. The former parapet of brick was replaced by one of stone and dressed flints, moulded string course, and gurgoyles of Decorated style. Thus about 7 feet was added to the height of the tower. The lead work of the roof was relaid, and the water conducted on to the roof of the nave by a pipe, the stone work generally was repaired, and new quoins inserted at the four angles.

At the time of the restoration a new flag-staff was erected, and the vane (which measures 5 ft. by 2 ft. 4 in.) pierced with the date 1884.



FONT, S. MATTHEW'S IPSWICH.



ANCIENT CARVINGS, S. MATTHEW'S, IPSWICH.

FONT.

The Font is octagonal, panelled, and very rich. It has been placed in various positions, at one time at the end of the south aisle, and till recently at the west of the nave beneath the gallery. Upon the erection and prolongation of the north aisle it was removed into its present position at the west end, commonly called the baptistery. The font has been well preserved. The panels are carved with double canopies, which enclose various subjects. At each angle a human figure, male and female alternately, stands upon a pedestal, beneath a niche. The subjects on the panels are :

1. Baptism of our Lord by John the Baptist.
2. The Annunciation, an angel bearing a scroll. A dove is represented close to the Virgin's ear.
3. The Wise Men presenting their offerings to the Babe seated on the knees of the Virgin, who is crowned.
4. The Assumption, the Virgin crowned, within an aureole, with hands together, and angels on either side, as if carrying her up into heaven.
5. Three figures, the centre one has her hands together, the one on the sinister side holds an orb, the hands of both outside figures are extended towards, and apparently crowning, the centre figure; suggesting that the subject represents the Virgin being honoured by the Father and the Son.
6. Two figures on thrones in glory, apparently the Virgin and her Son, or Christ and his Church.
A rose and foliage form the other two panels.

Beneath the bowl are angels at each corner, their wings filling the space between them.

The whole is supported by the usual emblems, and at the angles are the four Evangelists between them. The date is apparently the latter half of the fifteenth century.

The carved cover is elevated or lowered by a balance weight.

ANCIENT CARVING.

The church possessed in pre-Reformation times some excellent carved work. Several strips bearing various devices were discovered among some rubbish stowed away in the old tool house. Two of the pieces were surmounted by figures, the one of an animal; the other of an ecclesiastic, bereft of his head, seated in a chair, and robed in an amice clasped about the neck. These carvings probably formed parts of the old stalls. At the same time a fragment of stone, richly crocketed and groined was brought to light. It either formed the head of a canopy, or possibly a portion of the niche in the old south porch.

PAINTED PANELS.

In the vestry are preserved three double panels, painted and gilt, now forming part of the doors of a large cupboard. They represent two groups, nine men and seven women, clothed in what seem to be the dresses of a sisterhood, and four others wearing Episcopal vestments. The Bishops are mostly painted with gold. Three of them are giving the benediction: on their heads are mitres richly floriated, and in their left hands they hold crosiers, their costumes being the chasuble, dalmatic fringed at the edges, and alb with golden apparel. Around the head of each is a golden nimbus. One in a cope is more elaborately executed. Three of them are divested of their emblems, but one bears something in his right hand, much resembling a carpenter's gouge with a long handle. Perhaps this is meant for a windlass, the figure being intended for St. Erasmus. Some have considered that these paintings may be as old as the reign of Edward IV. Wodderspoon describes them as fragments of a painted rood screen.



PAINTED PANEL, S. MATTHEW'S, IPSWICH.



PAINTED PANEL, S. MATTHEW'S, IPSWICH.

Formerly there was in the Church a Chapel of St. Erasmus, as appears by the following: Alexander Sparhawk, of St. Matthew's parish, by his will, dated 1538, directed his "body to be buried in the Chapell of S^t Erasmus," "also I bequeath to the making of a parclose within the said Chappel of Erasmus, 20^s, and I will have a priest to sing in the said Chappel; also I gif to S^t Erasmus' altar" &c. There was also a guild of St. Erasmus, holden in the parish church. This seems to fix the date which would be late in the reign of Henry VIII.

STAINED GLASS.

When William Dowsing, the parliamentary visitor, in 1643, brake numerous "superstitious pictures, angels with stars on their breasts," &c., he probably included those in the windows. It is certain that the church anciently contained painted glass, as some fragments remained in the south window of the chancel till 1812, when they were copied by a Mr. Fowler. The east window of the south chancel is the oldest now existing. The stonework was removed in 1860, when the church was extended eastwards, the mullions being of the same form as those formerly in the south aisle, and similar to the present west window. The painted glass was a memorial to the second wife of the late rector, Mrs. Jane Trimmer Gaye, and inserted in 1853. The design was furnished by Mr. Frank Howard, who was an artist, and brother of the deceased. The subject was designed to be after the manner of Albert Durer. The window is in three compartments: the centre light contains a kneeling female figure, a portrait of Mrs. Gaye. Mr. Hedgeland, of St. John's Wood, executed the work. At the foot of the window is the following:

"In memory of Jane Trimmer Gaye wife of Charles Hicks Gaye, M.A., Rector of this parish, she died 23 Dec., 1852, aged 45, respected and beloved, as witness this window and her grave stone, both erected out of the freewill offerings of her husband's flock."

The next window was inserted in 1866. The subjects represented are the six acts of mercy.

"In memory of James Jeffries who died 12th Sep., 1863, aged 65 years, this window was erected by his affectionate Widow."

The more eastern of the two chancel windows is to the memory of Thomas D'Eye Burroughes. He was sometime alderman of the borough, and a justice of the peace. The window illustrates the parable of the good Samaritan. It is in six panels. The artists were Ward and Hughes, of London, and the cost was eighty pounds.

"In memory of Thomas D'Eye Burroughes, J.P., born 23 May, 1800, died 10 July, 1876, erected by subscription."

That window of the south aisle nearest to the chancel is by the same artists. The centre is filled with the Good Shepherd; on either side are portrayed Faith and Hope with the usual emblems.

"In memory of George Brame, who died Dec. 12, 1876, æt. 76, and Sarah his wife, who died Nov. 27, 1873, æt. 67, erected by their daughter, Sarah Ann Turner, 1880."

The centre window in the north aisle, by the same firm, represents some aspects of a clergyman's life and influence in his work of teaching, exhorting, and comforting: and these duties are represented by Eli instructing Samuel, our Lord's sermon on the mount, and St. John the Divine leading the Virgin Mary away from the cross. The portrait of the late rector is seen in the aged Eli.

"To the glory of God, and in memory of the Rev. Charles Hicks Gaye, M.A., Rector to this parish from 1848 to 1875. He died January 16, 1882, aged 78. By Parishioners and Friends."

(The window cost £74.)

The second most eastern window of the south aisle was the gift of Dr. Mills. It represents S. Matthew pointing to his gospel, chap. ix., verse 9. On either side are figures of SS. Peter and Paul. "In memoria Gulielmi, October 25, 1884." It is by W. H. Constable, of Cam-



PAINTED PANEL, S. MATTHEW'S, IPSWICH.



PAINTED PANEL, S. MATTHEW'S, IPSWICH.



PAINTED PANEL, S. MATTHEW'S, IPSWICH.



PAINTED PANEL, S. MATTHEW'S, IPSWICH.

bridge. The small two-light window in the east wall of the north aisle, also presented by the same gentleman, was formerly in the east window of Rushmere Church. It is of pattern work, with merely the Agnus Dei and sacred monogram in the upper part.

ORGAN.

Some of the older inhabitants remember the time when the music of the church was conducted by the violin and other instruments. There was no organ in St. Matthew's church prior to 1833. Hadgraft, the old sexton, kept a rough diary, in which was found this entry :

"A new organ was opened at S. Matthew's church, March 17, 1833, and a collection was made at the door. £17."

To the old organ here mentioned we find this allusion :

1834.—John Moore blowing bellows to Organ 1 year 10^s.

This instrument, subsequently erected in St. Mary Quay church, was credited to the amount of £30, and another organ purchased for £200 in 1854. It was placed in the gallery, but in 1860 it was removed into the north aisle. A swell was added in 1871.

On June 8, 1882, a new organ by Forster and Andrews, Hull, was opened by F. E. Gladstone, Esq., Mus. Doc. It contains 28 stops and 1,436 pipes. The old organ was sold for £80, and found a resting place in the chapel of the Lunatic Asylum, at Thorpe, next Norwich. The new one cost £627, other expenses making a total of £652.

COMMUNION PLATE.

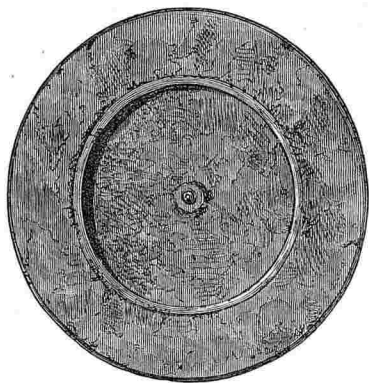
Several sets of plate have at various times been in use at the altar.

Among the Church Goods at the time of Edward VI. mention is made of

1. One payer of Challys of syluer and parcel gilt with Paten.



COMMUNION CUP AND COVER.
 ST. MATTHEW'S CHURCH, IPSWICH.
 (Half Original Size.)



PEWTER FLAGON AND PATEN.
ST. MATTHEW'S CHURCH, IPSWICH.
(Quarter Original Size.)

Of those now existing

2. Chalice of silver, with cover. The Cup stands 6 in. and is $4\frac{3}{4}$ in. in diameter.

On the Chalice is "Hoc facite . in . meam . commemorationem."
The foot is ornamented with scroll work.

Upon the cover is engraved "St. Matthew's, Ipswich."

The latter is of later date. In the Churchwardens' Books is this entry :

"1574. To Mr. Gilberd for ye communion Cupp cover xvij^s vj^d."
again "1588 for mendinge the top of the comunion cup jd.
1613. For the knopp of the Comunion Cupp xv^d."

3. A Pewter Flagon having a massive handle and lid with hinges is after the usual type. It stands about 12 in. high, and measures at the base $5\frac{1}{2}$ in.

The date of this is 1632, when the entry occurs "for a Pewter fflagon to be used att Communion 9^s"

There is a small pewter plate $6\frac{3}{4}$ in. in diameter, and another of same metal, of later date, measuring 9 in.

There is a plated service, consisting of a flagon, two cups, a paten, and four plates. The letters I.H.S. are on each, and with the exception of two of the plates, this is on all, "Parochiæ Sancti Matthæi Gippswichiâ D.D. Robertus Alderson, Rector."

1849. In this year three plates were provided for the Holy Communion, their cost was £5 15 6.

The sacred vessels now in use are very handsome, and were purchased by subscription in 1873. Besides the flagon there are two cups, a paten, and gold spoon.

CHURCHYARD.

1801. June 16.

This day the Right Reverend Charles, Lord Bishop of Norwich, consecrated a piece of ground (formerly glebe-land, but exchanged February 2, 1799, with Mr. Robert Stones Durham, that a grant of it might be made for that purpose), containing 1a. 1r. 36p. as an additional Burial Ground to the Churchyard of this Parish, in the presence of the Minister and Churchwardens, Sir William Innes, Baronet, and several of the principal inhabitants.

1802. Thomas Butler, bachelor, a private in the 13 Regt Light Dragoons, 23, Feb. 26. He was the first person interred in the new Burial Ground. (Parish Register.)

The first interment at the Cemetery was in July, 1855.

At a meeting held Easter, 1843, it was resolved to provide for the enclosure of the Churchyard, which had long been a disgrace, being open to almost every species of depredation, besides which, it had been a custom with some parties at night to turn cattle therein to graze.

The result was that the path running diagonally through the burial ground was discontinued, and the northern and eastern sides of the churchyard fenced with iron palisades. This work was completed in September, 1843, for £210.

Part of the stone wall was built in 1847, at a cost of £30, and the remainder the following year, at a subsequent outlay of £70. The tar path was laid on the north side of the churchyard in 1879.

CHURCH MEASUREMENTS.

CHANCEL	Length within Sacrarium		
		to First Altar Step	4ft. 6in.
		to Second „	2ft. 9in.
		„ Third „	3ft. 6in.
	Altar rails to Chancel arch, including step		24ft. 8in.
	Width		21ft. 11in.
NAVE	Length, 55ft. 3in. ; width,		20ft. 9in.
S. CHANCEL	- - - - - width,		24ft. 4in.
	Total length of S. Aisle, 88ft. ; width,		23ft. 4in.
N. AISLE	Total length, including organ		
	chamber, 87ft. 3in. ; width,		23ft. 5in.
BAPTISTERY	- Length, 17ft. 3in. ; width,		23ft. 4in.
S. PORCH	- Length, 6ft. 10in. ; width,		6ft. 2in.
TOWER	- Length, 15ft. 10in. ; width,		10ft.

The old parapet was 3ft. 7in. high, on the lead the date 1824. Mr. R. M. Phipson, Architect, in *Ipswich Journal* September 29, 1866, gave the height of Tower, 53ft. 9in. ; square, 19ft. 6in.

RECTORS OF SAINT MATTHEW'S, IPSWICH.

The list of rectors presents a goodly array of names. From records consulted it is evident that the parish was formed, and presided over by a clergyman, certainly as far back as the time of Henry III. or Edward I., about 1270.

The rectors appear to have been mostly resident in their cure, several retaining their office for many years; four holding it for a quarter, and one upwards of half a century.

Though the benefice is in the gift of the Crown, and has been served by men, many of whom were good scholars, it seems somewhat strange that so few of the number obtained superior preferment. Some were pluralists, but none obtained a mitre, or even a canonry, with the exception of the youthful Dean of Wells, supposed by Fiddes, to have been a son of Cardinal Wolsey, who held the rectory of S. Matthew's, with his other preferments.

Domesday mentions one Rogerus de Ramis had the church of S. George, Ipswich.

(Suffolk Domesday, by Lord John Hervey. 1889.)

The first rector concerning whom we possess any record is—

A.D. 1270. JOHN DE PLESSIS. His name is mentioned in the "Testa de Nevill."

Hundr' de Gypeswic'.

Ecclesia S^ci M^athi & ecclesia omni' Sc^or de Gippeswico s^ut de don' dⁿⁱ Reg' & Joh^ons de Plessis est psona p dⁿⁱm Reg^e.

De Ecclijs dic^ut q^d Eccia S^ci Martini & Eccia Onⁱi Sc^or, s^ut de donac^oe & Henr' de Weston tenet eas de dono dni Regis.

[Testa de Nevill, pp. 285 & 300.]

1297. ROBERT DE WALMESFORD (resigned).

1297. HENRY DE ATHELARDESTRE. The Patent Roll, at the Record Office, bearing date the 26th year of Edward I., 1297, states concerning the Presentation, that *Henry de Athelardestre*, has letters from the King respecting presentation to the church of S.

Matthēw, Ipswich, vacant by the resignation of *Robert de Walmesford*, the last rector of the same, and belonging to the gift of the King, and letters of the Lord King to the Bishop of Norwich. Witness the King at Westminster the eighth day of April by the King himself.

Prenstacione. *Henr. de Athelardestre* ht lrās R de ps ad eccliam Stī Mathi de Gypewyco vacantem p resignacōem *Rōbi de Walmesford* vltimi rectoris eiusdem, & ad donacionem Reg^s spectantem. et dñi lrē. R. Norwyc Epo T.R apd Westm. viij. die April p ipm Reg.

[“Presentations.” Patent Edw. pmi de. Benefic Ecclesiastic: presentat per Regem. A small ms. folio at Record Office, fol. 10. Pat. Roll 26, Edw. I., m. 21.]

1309. THOMAS DE HALIWELL, clerk, was instituted to S. Matthew's, March 14, 1309. This rector is the first one named in the bishop's register books at Norwich, which commence 1299. Dr. Tanner and Wodder-
spoon (p. 385), have Haliswell, whilst in the small ms. vol. of “Presentations” at the record office, the name is written Hylywell (f. 20. b.)

Dr. Tanner, in his ms. list of rectors (at Norwich Tom II., p. 1024), begins thus: R. S. Matthei “Domesd. Dns Rex Angliæ est Patronus illius. Estimatio eiusdem vj marc. Procuratio iij^s. Synodalia per annum ijs.”

De psentacōe. *Thomas de Haliwell* clicus het lrās R. de psentacōe ad eccliam sci Mathi Apli de Gippewyco vacantē et ad donacōem R. spectantē Et dirigunt lre P. Norwyceñ Epō. In cuius &c. D. R. Apud Westm. xxvj die febr̄.

[Record Office, Patent Roll, 3 Edw. II., No. 132, m. 20 & 28, fol. 20.]

INSTITUTION.

Ecclia Sci Mathi de Gypp. ij Id. Marcij, Anno dñi Supdcō London. *Thom de Haliswell* acolitus institūt fuit In ecclā Sēi Mathi Apli de Gypp vacatē ad psentacōem dñi Edward dei grā Regis Angl illustris veri patroni eiusdem. [Bishop's Register I., 35 b.]

1327. JOHN LE TANNER, presbyter, was canonically instituted Dec. 27, 1327, upon the presentation of Queen Isabel, because Parliament had declared Edward II. incapable of reigning, and the Prince of Wales was then only fourteen years of age.

[Bishop's Register II., 17.]

1342. ROBERT ATTE BOURNE, upon the presentation of King Edward III., was instituted July 21, 1342.

[Presentations, fol. 90 b. Patent Roll 16, Edw. III., pt. ii., m. 31, No. 209, fol. 90 b. Norwich, Bishop's Register III., 60.]

1344. OLIVER DE DYNELAY, alias DYNELEY, was instituted by Bishop Bateman, July 8, 1344: Wodderspoon (p. 385) following Dr. Tanner's list at Norwich, writes the name de Druelda, which is obviously incorrect.

[Presentations, fol. 96 b. Paten: de A°. xviii°. Edw. IIIth ps. ja. m. 6. No. 213. Fol. 96 b. Bishop's Register IV., 44 b.]

Oliver of Dynelay was, upon the presentation of the king, instituted rector of Stoke Ash, August 1, 1346, an appointment, however, which he held only a year.

D. E. Davy quotes from Orig. de A° 20 Edw. III. (i.e., 1345) rot. 9. Suff. the following in Latin: "The King, on the petition of William Lound, etc., conceded to *Oliver de Denelay*, parson of the Church of Stoke next Eye, all the tithes, etc., of the lands, etc., belonging to the Priory of Eye now in the hands of the King, within the limits of the parish aforesaid. The King's rent thence xx^s vj^d yearly. Abbe: Rot. Orig. vol. II., p. 180." [Proceedings of Suffolk Institute IV., 427.]

1344—1345. JOHN DE BELLERBY was upon the resignation of Dynelay, collated January 22, 1344. He held the Deanery of Loes, which he exchanged with W. Dele.

[Presentations, 99 b. Patent Roll 18, Edw. III., pt. ii., m. 7, No. 214. Bishop's Register IV., 48 b. Pat. Roll 19, Edw. III., i. m. 16, No. 215.]

1345. WILLIAM DELE, of Shereford, was instituted to S. Matthew's, June 30, 1345, vacant by the resignation of John de Bellerby.

[Presentations, f. 102, 19 Edw. III., Reg. 6. Bishop's Register IV., 50 b.]

1350. ROGER HAMMOND, of Charsfield, was instituted March 31, 1350.

[Presentations, f. 139. Pat. Roll 24, Edw. III. I. 19, No. 232. Bishop's Register IV., 121.]

1358—1372. SIMON COLYN DE CRANEWYS, was instituted June 23, 1358, and resigned S. Matthew's, having effected an exchange with William de Kyrkeby, who was instituted into the church of Bradfield S. Clare, July 17, 1372.

Wodderspoon, following a mistake of Dr. Tanner, erroneously inserts the name of Stephen Atte Crouch before De Cranewys, spelling same Cranewis, but, as pointed out by the pencilled initials W. L. (for William Layton), the institution of that clergyman was to S. Matthew, in *Norwich*. [Bishop's Register v., 27.]

1372. WILLIAM DE KYRKEBY, instituted July 17, 1372.

[Bishop's Register vi., p. 15.]

1373—1378. BARTHOLOMEW BENEYT, of Bury, was instituted December 24, 1373, at Hoxne. After holding the benefice five years, Beneyt exchanged with his successor. Beneyt. resigned S. Margaret's, Ilketshall, Jan. 18, 1381. [Bishop's Register vi., 24, 77 b.]

1378—1380. HUGO DE CONTASTHORP, Presbyter, was instituted at Blofield, July 21, 1378, to S. Matthew's, vacant by exchange with his predecessor Beneyt, for the parish church of S. Margaret's, Ilketshall. Contasthorp was some time at Hautbois Parva.

[Bishop's Register vi., 59. Wodderspoon writes the name Hugo de Carlesthorp. Countesthorp was rector of Taverham 1384—1386. Blomefield x. 472.]

1380. JOHN BALDEWYN, was instituted at South Elmham, November 2, 1380, to S. Matthew's, vacant by the resignation of Hugo de Contasthorp, the last rector, by reason of exchange. Baldwyn was rector of Hautbois Parva, Norfolk, from 1368 to 1380, having been previously vicar of Thorp Market, 1361—1368. (F. Bloomfield's *Hist. of Norfolk* vi. 296, viii. 174.)

John Baldewyn is thus mentioned in a Clerical Subsidy in the time of Richard II., at the Record Office :

Ric. II. *Norwicen dioc.* Names of clergy in the Archdeaconry of

Suffolk and Sudbury chargeable to a Subsidy. On a strip of parchment, without date :

Decanatus Gip.

Eccle. Johñs Baldwene Rect' sc̄i Mathi iij^s. iiij^d.

[Record Office, Clerical Subsidy, Ric. II. 4th. Bishop's Register vi., 71.]

1381. JOHN ELMEDE, "holding the first clerical tonsure" was instituted Jan. 19, 1381.

[Bishop's Register vi., 77 b.]

1383. THOMAS MONIE was instituted Feb. 26, 1383, to S. Matthew's, Ipswich, with the chapel of All Saints annexed.

[Bishop's Register vi., 97.]

1404. RICHARD CRESE "having the first clerical tonsure was canonically instituted" December 24, 1404:

[Bishop's Register vi., 313 b.]

1405. HENRY BUNNE was collated October 23, 1405, by Bishop Despenser, the benefice being in his gift for this time by lapse.

[Bishop's Register vi., 326 b.]

1406. WILLIAM KYRKEHAM, Clerk, of the diocese of Lichfield, was admitted May 20, 1406, to S. Matthew's, with the chapel of "All Saints," vacant by the death of the last incumbent:

William Kyrkeham is omitted by Dr. Tanner, and consequently also by Wodderspoon. [Ducarel's Index, British Museum, Arundel II., f. 433. Lambeth Library: Arundel I., 307 b.]

1407. THOMAS CAULE, Chaplain, was instituted November 20, 1407, to S. Matthew's, with the chapel annexed to the same, on the presentation of Henry IV.

[Bishop's Register vii., 2 b.]

Thomas Caule was living A.D. 1420, for we find him thus mentioned in the Will of one *Margaret Weyland*. "*Thomas Caulee parson of the church of S. Matthew of Gippewic &c. I leave to each convent of the orders of Friars of Gippewic twenty shillings; and the residue of all my goods and chattels I give and bequeath to the aforesaid James Andrewe, Thomas Caulee, William Brook (of Henley),*

and John Redy, chaplain, whom I appoint my executors." Dated at Gippewic, 9 August, 1420.

[Historical ms. Commission, Appendix to Report ix., i., fol. 228 b.]

1429. WILLIAM GOSSELYN was ordained deacon in 1413, with a title to S. Peter's, Ipswich; and instituted to S. Matthew's, November 7, 1429, vacant by the death of the last incumbent.

[Bishop's Register vii., 95 b.; vii., 96 b.; vii., 97 b.; ix., 36 b.; 94.]

1439—1444. JOHN CREWE. Richard Deer in his Will dated September 27, 1439, leaves twelve pence to John Crewe the parish priest; who also received two shillings under the Will of Edmund Bercock, April 25, 1444. Omitted by Wodderspoon.

1458. JOHN BAKER. Walter Velevet bequeathed twenty pence to John Baker, parish priest of S. Matthew's church, by will dated January 3, 1458. Name omitted by Wodderspoon.

1473. ROBERT BOTHE was instituted December 19, 1473, but resigned after three years.

[Bishop's Register xii., 33 b.]

1476. EDWARD ASHTON "Holding the first tonsure" was admitted Nov. 12.

[Bishop's Register xii., 15 b.]

1500. JOHN DEBYNHAM. One John Rychys, in his Will proved 1501, mentions "Syr John Debynham my goostlye ffadre."

1506—1520. JOHN MASTER. Sir John Master, my gostly ffader and curate of S. Matthew's parish, is mentioned in the Will of William Sharpe, dated 1506; and again by William Davis, in November, 1520. These two last names are omitted by Wodderspoon.

1510—1525. JOHN BAILY, D.D., of Gonville hall, Cambridge, was presented August 24th, and instituted November 30, 1510. The name of this rector appears among a list of "Spiritual Persons," contributing to "an annual grant by the spirituality to the King, for the King's personal expenses in France for the recovery of the crown of the same."

[Pat. 2 Hen. VIII., p. 2, m. 6. Letters and Papers Hen. 8 (Brewer) Rolls Ser. i. 181. pub. 1862, A.D. 1522, ib. pp. 1048—50.]

From the Ipswich Corporation records it appears that Dr. Baily had granted to him in 1518, part of the common soil in S. Matthew's parish, and the cellar over the gaol, for three years, without rent.

[Bacon's Annals of Ipswich, ed. by Richardson, p. 191.]

Dr. Baily was one of the Founders and Benefactors of Gonville and Caius College, Cambridge, giving to the same upwards of £300. With £200 thereof were bought lands in Haddenham and other places in the isle of Ely, of William Buckenham, then master of the College. This Dr. Buckenham is twice mentioned in Baily's Will, at which period he was parson of "Saint anghells, Norwich." In addition to land, Baily gave his house in the parish of S. Edward, in Cambridge, on Pease-market hill, "to the maintenance of a fellow student in physic or divinity, nor to be a priest unless he would."

[Athenæ Cantabrigienses, by C. H. Cooper, 1858, i. 51. Select Papers, &c., by John Ives, 1773, p. 53, 4to. Commemoration of Founders and Benefactors Gonville and Caius College, 1856, p. 7. Documents relating to the University of Cambridge, 1852, i., p. 229.]

Dr. Baily died between July and September, 1525, and desired in his will (Proved 9 Sep., 1525), to be buried in the chancel of S. Matthew's church before the high altar, and a stone laid upon his grave.

This stone has disappeared but Davy states that in 1824, amongst three stones robbed of their brasses, was one which he supposed to be that to Baily. "The traces of the figure," he says, "are nearly worn out, but from

the cup and wafer above, there can be no doubt it was laid down in memory of an ecclesiastic, and it is very probably intended for Baily, mentioned in the Blois ms.

There is a note in Dr. Tanner's list of rectors at Norwich from Gipps ms. "In the church 1661, I saw a Marble under which lyeth John Bayly D.D. who was Incumbent in the time of Henry VIII., and contested with Cardinal Wolsey about the alienation of the Great Tithes worth £200 p. an. There belonged to S. Matthew's, S. George's Chapel, the Lady Grace's Chapel and S. Peter's Church, the Rector allowing to the Minister who officiated in this last £3 per an."

A.D. 1510. *Johes Bailly* Theologie pffessor het Iras &c de pſentacoē ad eccliam parochialem ſci Mathei in villa Gipwici p mortem ultimi incumbentis eiudem vacañ et ad duñ &c pleno iure ſpectan et Ire ille. Pat. 2 Hen. VIII., p. 2, m. b.

[Paper Book in the Bishop's Registry, Norwich, xv. 66, b.]

WILL OF JOHN BAILY, D.D.

In the name of God, Amen, I Maister JOHN BAILY Doctor of Divinitie and parson of the piſhe church of ſaint Mathewe in the Towne of Yepiswich and wtin the Diocs of Norwiche the vijth day of July, In the yere of our lord god a Thousand fyve hundred and xxv, And in the yere of the reigne of king henry the vijth the xvijth being of hole and parfite Remembrauns make my last will and testament in fourme folowing that is to ſay firſt I commende my ſoule to almighty god and to our lady and to all the holy company of hevyn and to ſaint mathewe my advowry, And my body to be buried in the *Chaunsell of ſaint Mathewes Church* aforſaid before the high awter with a ſtone convenient for the Rome to be leide upon my grave as ſhall be thought moost convenient by myn executours Item I geve to the ſaid Church of ſaint *Mathewe* my ſilver baſon Item I geve to the mayntennce of ſaint Raſimus guylde (S. Erasmus. Guild) xxſ. Item I geve to the Church of ſaint *Margaret* in Yepiswich aforſaid xls. Item I geve to euery *house of ffreses* wtin yepiswiche aforſaid xls. Item I geve to Blase Blundy my ſerunt xli. Item I geve to the ſaid Blase the ſtuffe in all my Chamber that is to ſey bedding cupbords ſtolys (ſtools) cheres pewter brasse cuſsheus preſſes my ſhort gowne my beſt doblet and my beſt cote my beſt paire hoſys, and all pewter potts lattyn baſyns and candleſticks Item I geve to William Whitman my ſerunt my thre hoſes wt all my ſadills and bridills and their appurtennecs Item I Remitte and forgeve Roger Pickerell my ſerunt fyve pounds of the money that he doth owe me, Item I doo Remitte and forgeve Thomas Barker of Norwiche tenne pounds of the money that he dothe owe me,

Item I geve to James Baily my brother Ciscely Baily and Dorathe Baily my sisters to euery of them *vjli xiijs iiijd*, to be paid unto them when they shal be maried And yf they dye before to remayn and be in the hands of myn executours towarde the pformauns of this my testament Item I geve to my brother for Robert Baily my blewe gown lyned wt satten of Turkey and the hoode lyned with crymsyn satyn, Item I geve to Sir John Burry my syngle tawny gowne. Item I geve to maister Doctour Bukenhm my crymsyn gowne in greyned with the hood. Item I geve to maister Edward Graham my depe blewe gowne lyned with chamlet and the hood lyned wt crymsyn velwet Item I geve to the prior of *Crist's church in Ippiswiche .xxs* And to evry chanon in the same house *xs* The Residue of all my moueable goodes and all my debts before not bequethed, and all my londes and tenements I will that they remayn and be in the handes of myn executours, towarde the pformance of this my testament, And to thentent that my said executours shall dispoase them in dedes of charitie for the helth of my soule and all xpen soules whom I ordeyn and make Maister Willm Buckenham doctour of diuinitie pson of saint anghells in Norwiche maister Edward Crome of Cambridge Bachelor of diuinitie, Blase Blundy my serunt, Item also I ordeyn and make James hill of yepiswich an other of myn executours whom I geve *iiijli* and my depe blewe gowne furred with the hood and humfrey wyngfeld Esquier to be Supuisour of this my testament desiring him to aide my said executours in euery thinge for the true pformance of this my said testament To whom I geve for his labor *vjli. xiijs iiijd*

PROBATUM Nono die mensis Septembris, Anno dni Millmo quingentesimo vicesimo quinto, Coram prefats Comissarijs in ecelia Cath dni pauli London, Executores noiat in testo antescripti defuncti, Recusarunt onus execucionis eiusdem in se assumere In psona magri Joannis Johnson procuris &c quam Recusacionem Comissa fuit administracio anthe prefatorum Exrs patrum onn et singulorum bonoru Jurm et creditorum dicti defuncti prefat execut. [Somerset House. *Bodfeld*, f. 36]

1526. THOMAS WINTER was the adopted son of Cardinal Wolsey, through whose influence he was appointed to S. Matthew's. This was perhaps the smallest piece of preferment he held, for several dignities were conferred upon him before he was of age. Winter was educated at Oxford, also at Paris to obtain proficiency in such arts and sciences which our Universities in England could not yield.

[*Athenæ Oxoniensis* II.; *Fasti* 73.]

He must have been very young when collated to the Prebendary of Lincoln, 28 March, 1522. He was Dean of Wells from 1525 to 1530-1.

In a letter dated Paris, 1527, it is said of Winter, the youthful dean of Wells, "every one praises him, for his own deserts and for Wolsey's sake;" and in the following year that he "studies very diligently," learning Greek, Latin, and other things, and that "no one could be more inclined to probity, humanity, and letters."

Blomefield's Norfolk iii., 653. [Reg. Nix xiv.]

The young dean is thus mentioned in a letter to Wolsey bearing the same date, "surely your Grace will like Master Dean very well now. He has grown much in body and mind, and gives himself well to learning. He is three fingers taller than when Wolsey saw him last, and beginneth to grow in breadth to a very good and a comely man's stature and fashion."

[State Papers iv., i., pp. 276, 793, 898, 1146, 1251, 1283, 1307, 1758, 1783, 1858. iv., ii., p. 1889, 1973, 1975.]

It is uncertain whether Winter obtained a degree, but a supplicate was made on his behalf at Oxford in 1526 to be a B.A. This, however, was immaterial, because he obtained from the Pope a dispensation to hold the deanery of Wells, which had been conferred upon him the previous year. [State Papers.]

A grant of arms, much resembling those of the great cardinal, was made by Thomas Wrythesley, garter, to Thomas Winter, March 26, 1526, by which it appears that he was at that time not only Dean of Wells, but also Prebendary of Lutton, Archdeacon of York and Richmond, Prebendary of Strensall, Chancellor of Sarum, Prebendary of Bedwin, Provost of Beverley, Prebendary of S. Peter's there, Prebendary of Milton, Lincoln, Prebendary of Norwell, Rector of Rudby, Yorkshire, and Rector of S. Matthew's, Ipswich.

[State Papers, Vol. iv., i., p. 923. Life of Cardinal Wolsey, by Richard Fiddes, 1726, pp. 109, 502.] *ed 1723. Coll. p. 219*

The foregoing does not comprise all the ecclesiastical preferments held by Winter, for in addition he enjoyed

the Archdeaconries of Cornwall, Norfolk (Reg. Nyx. xiv., f. 173), and Suffolk (Reg. Nyx. xiv., f. 206.)

[Le Neve Fasti i., 153; ii., 187, 484, 489, 651; iii., 134, 141, 216.]

Though Winter was nominally the pluralist, it is more than probable that the emoluments were received by Wolsey, because upon his impeachment in 1529, the preferments mentioned above fell vacant.

Winter doubtless shared his patron's fall, but whether everything was taken from him is unknown. Wolsey died at Leicester, November 29, 1530, a fact which doubtless increased Winter's uneasiness, because in a letter written by him to Cromwell, from Padua, 20 October, 1532, he complains that "Bonner is always threatening that he will endanger my preferments, and deprive me of all that I have by the Canon law. This the man to whom the late Cardinal just before his death commended me quasi fratrem frati, as a brother to a brother." He appears to have held the Archdeaconry of York till 1540, when he resigned the same. What became of Winter is unknown. There is no monument to him at Wells.

[History and Antiquities of Oxford, by John Gutch, ii., 39. Add mss. Brit. Mus., 19,093, f. 62. Bishop Kennett's Collections, vol. xlv. Lansdown, 979, f. 195. Wood's Fasti i., 673. Pat. 21, H. 8: Pars. 2, m. 5. Letters and Papers H. 8, vol. iii., pt. 2, 3594; vol. v., 338. Hist. of Norfolk, by Blomefield, vol. iii., 644, 653. Bishop's Reg., vol. xiv., f. 206.]

In 1528 Wolsey had granted to him by Henry VIII. the perpetual advowson of S. Matthew's, with power to unite it to the college, of S. Mary, Ipswich.

[State Papers, 20 Hen. viii.]

1538. RICHARD ALYN. Sir Richard Alyn, curate of the parish, is mentioned in the Will of Alexander Sparhawke, dated 1538.

1544—1547. JOHN FOWLER is mentioned as curate in the Wills of Roger Hayward, Margaret Heyron, Elizabeth Smythe, and Miles Waller, dated 1544 to 1547.

1555. RAD THORNTON. Wodderspoon inserts his name.

[Radus Thornton paid First Fruits, for Cleydon, r. 1 & 2, Phil. & Mar.]

1558. RALPH CARLTON. He is mentioned as curate of S. Matthew's, and S. Mary-at-Elms, and as having refused to be divorced from his wife.

“That Ralph Carlton, may be convented, whether by corruption of money he hath crossed his book, and hath not received indeed, as it is reported.”

[Acts and Monuments of John Foxe. VIII., p. 600. Pub. 1849.]

1565. EDMUND BARKER. A Certificate of John (Parkehurst), Bishop of Norwich, dated 16 Jan., 8 Eliz. (A.D. 1565-6), gives the names of those refusing to pay, and the benefices vacant indebted to the subsidy thus:—

Edus Barkr de poch sci Mathei in Gipwic.

[Clerical Subsidies. *ffra.* Record Office.]

1573. THOMAS MAYE. His name occurs in a certificate of John, Bishop of Norwich, dated Feb. 5, anno 15 Elizabeth, 1573, containing the names of the stipendiary clergymen who were chargeable to the second annual payment of the subsidy. Decanat Bosmere:—

Thomas Maye stipend de sci Mathei de ibm (Gippeswich) vjs viijd

[Clerical Subsidy. *ffra.* Record Office.]

The old Churchwardens' Book has this entry:—“1574, first paid to Mr. Maye for his q^t wags dewe at Xpemes. 1^s. To Mr. Maye for iij weks svce x^s.”

1574—1578. MR. HAFYN. In the Churchwardens Book for 1574, are found payments to Mr. hafyn for vi weks svce xx^s. to Mr. Hafyn for mydsom qrt. 1^s.

1580. MR. HANNAM.

ffor Mr. Hannam ministers wages xijd.

1586. ROBERT NORTON, S.T.P., of Caius College, Cambridge, took the degrees of B.A. in 1558, M.A. in 1563, B.D. in 1570, and D.D. 1575. In 1569 he was appointed to the vicarage of S. Mary Endgate, Beccles, and in 1572 was presented to the rectory of Aldeburgh-cum-Haselwood, where he resided though appointed, in 1576, the principal common preacher of Ipswich with a stipend of. £50 per annum, which seven years afterwards was increased to £73 6s. 8d.

In 1585 disputes arose between him and Mr. Negus, the second preacher. The proceedings ended in the defeat and departure of Dr. Norton, "who hath a benefice at Aldeburgh." The corporation, however, gave him a certificate to the effect—"that his discharge was given to satisfy scruples concerning non-residency, but that his life was blameless, his doctrine orthodox, his family well governed, and that he was personally diligent and industrious." The hard treatment Dr. Norton received, at the hands of the corporation, may have evoked a sympathy which obtained his promotion to S. Matthew's on the 3rd of May, 1586.

Dr. Norton was the author of: "Certaine godlye Homilies by R. Gvalter, translated by Robert Norton, Minister of the Worde in Suffolk." Lond. 1573. pp. 316.

[Athenæ Cantabrigienses by C. H. Cooper, 1858, I., 516. J. Wodderspoon's Ipswich, 368-370. Bacon's Annals of Ipswich, 310, 342. Register of Crown Presentations. Lans. 443. I., 3,75 : 444 II., 12.]

That this rector married, appears from an entry in "Bacon's Annals of Ipswich:"—John Norton, son of Dr. Norton, shall have £6 yearly towards his maintenance at study at Cambridge for six years (p. 360).

1587—1589. MR. PRICK, *the Minister*, is mentioned in the Churchwardens Books: 1587, "to Mr. Prick the minister for makinge a Register book iiiij^s," and 1589, "p^d Mr prick the minister for his wages xxx^s."

1614—1638. THOMAS FOSTER was ordained priest by Richard Barnes, Bishop of Durham, in 1584. He accepted the curacy of S. Matthew's, with S. Mary Elms, in 1590, for in the churchwardens accounts occurs this entry, "paid unto M^r Ffoster at his first cominge x^s." His stipend was £20 a year.

On the 19th of July, 1614, he was presented to the rectory, and inducted into the same on the 27th of that month, a memorandum occurring in the Parish Records to this effect, that on "the daie and yeare above written Thomas ffoster of Ipswich, Clerk, did take quiet and

peaceable possession of the church of S. Mathew, with all the rights thereunto belonging, which possession was given him by Mr. Thomas Girthwhayte, minister of S. Laurence, Ipswich." Foster also held the vicarage of S. Mary Elms.

[Pat. Roll, 12 Jac. I., Part 10, No. 77. Bishop's Reg. xxii., 18, 49 b.]

A serious epidemic prevailed during the period of his ministry. The Churchwardens' Accounts mention a book being provided for him in the "time of the visitacon of sickness;" and in 1605 payment was made to Myles Rose, the sexton, for "burying Edmund Bowle, his household and children, who died of the infection of the plague, and for ringing of the bells for divers sick persons of the plague at sundry times." Rev. Thomas Foster, was a contributor to the Public Library in 1630.

[Ipswich Gifts and Charities, p. 116, pub. 1819.]

Foster was buried November 24, 1638, being "full of years," having had a large family as appears by the parish register.

BAPTISMS.

1592. Sara daughter of Thōms ffoster & Rose his wife, 14 Maie.
 1595. Jane daughter of thōms ffoster & Rose his wife, 6 Julie.
 1598. Elizabeth daughter of thōms ffoster & Rose his wife, 9 Aprill.
 1601. Thōms sonne of thōms ffoster & Rose his wife was baptized the xij of Aprill.
 1603. Eleazer & James sonnes of Thōms ffoster & Rose his wife xij februarie.
 1606. Richard sonne of Thōms ffoster, minister of St. Mathewes & Rose his wife xxij noumbr.
 1614. Beniamine sonne of Thōms ffoster minister of this pish & Rose his wiefe was baptized the xyj of October 1614.

MARRIAGES.

1621. Withm fferres & Elizabeth ffoster were married Aprill ijth.

BURIALS.

1604. James sonne of Thomas ffoster an infant eight weekes 3 dayes ould iij Aprill.
 1614. *Rose wife of Thomas Foster was buried Janu: viij. 1614.*
 1638. *Mr. Thomas Foster parson of the parish was buried Novem. 24: "full of yeeres & in a pfect age."*

WILL OF REV. THOMAS FORSTER.

In the name of God Amen the xxijth daye of September In the xiiijth yere of the Reigne of o' souayne lord Charles by the grace of God of Ingland Scotlond ffraunce & Ireland Kinge defender of the faithe &c. Annoqu dni 1638, I *Thomas fforster* of Ipsw^{ch} in the Countie of Suff Clarke beinge sicke in boddie but of God & pfect Remembrance God be thanked therefore doe ordeyne & make this my last will & Testant in manner & forme followeing: ffirst & most principallie I doe most humblie comend my soule to God Allmightie The father, The Sonne & the holie Spirite Assuredlie hopeinge & most stedfastlie beleveinge In & thoroughe the onelie death merites & passion of Jesus Christ my Alone Savio' & all sufficient Redemer to have free pardon & Remission of all my Synnes And to be An Inheritor wth him in his everlastinge Kingdome spared for his elect before the begyngunge of the world And my boddie to the earthe from whence it came. And as for that small estate w^{ch} God of his Godnes hath lent me in this lief, I doe by his divine pmission dispose thereof as followethe That is to saie I will & bequeathe my messuage or tente wherein I doe nowe Inhabeite & dwell situate & beinge in the pishe of St Mathewe & the pishe of St Marie att the Tower in Ipsw^{ch} or in ey of them to my executors hereafter named & to there heires & Assignes to the use Intent & purpose that they or the heires of the S^{iv}ivor of them doe wthin one yere next after my death, make sale thereof wth the Apptenincs for the best price that maie be obteyned for the same And the monie for w^{ch} the same shalbe soe sold. I will shalbe divided in forme followeing viz to my sonne *Richard fforster* Thirtie pounds, To my sonne *Thomas fforster* Thirtie pounds, to my sonne *Beniamyne* Twentie pounds the Remynder of the monies for w^{ch} my said messuage shalbe sold I will shalbe equallie divided betwene & Amongest my three daughters *Sarae Smithe* the wief of Johu Smithe, *Elizabethhe* the wief of willm fferris and *Jane Ludbrooke* wedowe pt & pte like, Item I will & bequeathe unto the said Jane Ludbrooke my daughter my Great Chest in the hall, The Bedstedd ffetherbed & all the furniture thereunto belonginge, except the Redd Blanckett standinge in my hall Chamber, Item I geve & bequeathe unto the said *Elizabethhe fferris* my daughter, The blacke troncke standinge in the said hall Chamber & the bedsted & beddinge & all the furniture thereunto belonginge standinge in the butterie Chamber wth the said Redd blanckett And I further geve & bequeathe unto my said twoe daughters *Elizabethhe* & *Jane* all such fringe of wood Brome & Coales as I shall have att the tyme of my death, to be equallie divided between them. Item, I geve unto the said *Richard* my sonne my great Backed lether Chaier standinge in the hall, Itm I geve unto *Beniamyne* my sonne, one Ather great lether Chaier standinge in the parlor, Item I geve unto *Robt ludbrooke* my grandchild my great Joyned Chaier in the plor And allsoe the trendle bedsted & bedd wth all the furniture standinge on the butterie Chamber. All Ather my household stuffe lynnyn brasse & pewter & moveables whatsoever, I geve & bequeathe

unto my said three daughters *Sarae, Elizabethhe, & Jane*, to be equallie devided amongst them. And I will & my meaninge is that all my Apell & all my bookes shalbe sold by my executors hereafter named & the monie thereof arrysinge to be equallie devided betwene my said twoe daughters *Elizabethhe & Jane*, And all Ather my monies debts & goods whatsoever not by me herein before geven & bequeathed, (my debts, pbate of this my last will & testamt & severall expences discharged) I will shalbe, & Remeyne to my said twoe daughters *Elizabethhe & Jane* to be equallie devided betwene them And of this my last will & testmt, I doe ordeyne & make thie said *Richard* my sonne & *Jane* my daughter my executors And this Gevinge all glorie honno' & preyse to God Allmightie I conclude this my last will & testmt In witnesse whereof I have to evere leafe hereof beinge three in nomber sett my hand & fixed my seale in the toppe thereof in the psence of the psons hereunder named beinge witnesses thereunto speciallie called the daye & yere first aboue written.

signed p x Thome fforster.

hijis testbs John Lambe
John flamys

Probatu fuit apud Gippw^{co} quinto die mens Decembri Ano dni 1638 jurant Jane Ludbrooke vid. & Rich fforster. [Ipswich Prob. Reg., 62.]

1638. GAWEN (GAGWINUS) NASH, S.T.B., was elected a Fellow of Pembroke Hall, Cambridge, in 1627, and appointed minister of S. Mary Tower, Ipswich, 1637-40, as appears by a testimonial to his character, by Robert Cottesford, rector of Hadleigh, and others, that he "had lived amongst them three years irreprovably, preached the word of God constantly and orthodoxally, acknowledged the King's supremacy, above the usurped authority of the Pope of Rome, and never had spoken anything in defence of Popery."

[State Papers, Domestic, pub. 1877, p. 547.]

Nash was instituted to the rectory of S. Matthew's in 1638. How long he held this benefice is uncertain, but he was vicar of Waresley, S. Neots, from 1642 to 1658.

The parish register there records the baptisms of several children of G. Nash and Ma:y his wife.

[Cole's mss., Brit. Mus., Vol. L., p. 216. Pat. 14 Car. I., p. 1, m. 118. 1638. Rymer Fœdera (R. Sanderson), pub. 1735, Vol. xx., p. 319. Bishop's Register, Lib. Montague xxiv., 5.]

1655—1694. WILLIAM KNIGHT, son of William Knight, of Tuddenham hall, Gloucestershire, was appointed to S. Matthew's by Oliver Cromwell, in 1655. He also held with it S. Mary Elms, where he was buried January 6, 1694. This note of his induction occurs in the churchwardens' book :

"1655. July 27th. The day & yeare above written. *William Knight* of Ipswich Clarke did take quiett & peaceable possession of the Church of S^{nt} Mathewes in Ipswich with all the rights thereunto belonging, which possession was giuen him by Mr. Samuell Goltly minister of the Key parish." From the same authority we learn his wife's name thus, 1692, "Rec^d of Mr. Willm: Knight Clarke & Anne his wife" &c.

S. MARY ELMS REGISTER.

"Wm: Knights was Bured Janewary ye 6, 1694."

S. MATTHEW'S REGISTER.

"1685. Daniell Cole and Elizabeth Knight single persons were marryed the 27th December 1685."

Arms:—A lance right up, on either side a bunch of grapes.

[Suff. Fams. Conder, p. 31. Davy M.S. Add. 19,094, f. 99.]

WILL OF REV. WILLIAM KNIGHT.

In the name of God, Amen I *William Knight*, Rector of St. Matthew's Church in Ipswich in the County of Suffolk being weak in body but of sound & perfect mind & memory (praise be given to Almighty God therefore) doe make and ordaine this my last will & Testant: in manner & forme followinge (that is to say) ffirst & principally I commend my soul into the hands of Almighty God hopeing (through the meritts death & passion of our blessed Saviour Jesus Christ) to have full & free pardon & forgiveness of all my sinns & to inheritt everlasting life, my Body I committ to the Earth to be decently buried at the discretion of my Executrix hereafter named, And as touching the disposition of all my temporall Estate, I give & dispose thereof as followeth, Imprimis I will that my debts & funerall charges shall be paid & discharged. Item I give devise & bequeath unto my loving daughter *Elizabeth Cole* (the wife of Daniell Cole gentleman) all & singular my messuages lands Tenem^{ts} & hereditamts whatsoever whereoff or wherein I am or shall be seized or interested at the time of my death with their & every of their appurtencēs & all my Estate right Title & interest of in & to the same & every of them, To have and to hold the same & every of them with their & every of their appurtenances unto her my said daughter *Elizabeth Cole* her heires & assignes for ever, Item I give & bequeath

unto my said daughter *Elizabeth Cole* all and singular my goods Chattels, leases, debts, ready monèy, plate, Jewells, rings, household stuff & all other my personall estate whatsoever, upon this speciall trust & confidence that she shall thereout, make such necessary provision for her self & for such child or children as she shall have at the time of my decease as shall be thought reasonable for her & their support & maintenance according to the discretion of my said daughter, And I doe hereby make constitute & appoint the said *Elizabeth Cole* the full & sole Executrix of this my last will & Testam^t hereby revoking disannulling & making void all former wills & Testam^{ts} by me heretofore made either by word of mouth or in writing, In Wittness whereoff I the said William Knight to this my last will & Testam^t have sett my hand & seal, this fourteenth day of August in the year of our Lord one Thousand six hundred ninety & three & in the fifth year of the reigne of our most Gracious Sovereigne Lord & Lady William & Mary by the grace of God of Englad Scotland France & Ireland King & Queen defenders of the faith &c.

William Knight.

Signed sealed published & declared by the s^d William Knight to be his last will & Testam^t in the year of us whose names are hereunto subscribed as witnesses hereto & attested by us by subscribing our names as witnesses hereto in the presence of the said William Knight.

Richard ffouller, Mary ffoulger, Susan Anmer her mark.

Proved 24 January 1694, By oath of Executrix.

[Ipswich Probate Registry, f. 56.]

PRESENTATION BY OLIVER CROMWELL.

WILLIAM KNIGHT.

Know all men by these p'sents, that the 18th day of May in the yeare One thousand six hundred fifty and five, There was exhibited to the Commissioners for approbation of publike preachers : A presentation of William Knight Clerke, Master of Arts to the Rectory of Mathewes in Ipswich in the County of Suffolke made to him by his Highnesse Oliver Lord Protector of the Comon Wealth of England &c the patron thereof under the great seal of England Together with a testimony in the behalfe of the said William Knight of his holy & good Conversation Upon perusall and due consideration of the promises, & finding him to be a person qualified as in & by the Ordinance for such approbation is required. The Comissioners above mencōned have adjudged & approved the said William Knight to be a fit person to preach the Gospell, and haue graunted him admission and doe admitt the said William Knight to the Rectory of Mathewes in Ipswich aforesaid to be full & perfect Possessor & Incumbent thereof. And doe hereby signify to all persons concerned therein, that he is hereby intituled to ye profits & perquisitts, & all Rights & dues incident & belonging to ye said Rectory as fully & effectually as if he had bene iustituted & inducted, according to any such Lawes & Customes as have in this Case formerly bene made had

or used in this Realme. In witness whereof they have caused the comon Seal to be hereunto affixed & the same to be attested by the hand of the Reg^r by his Highnesse in that behalfe appointed Dated at Whitehall the 11th day of July 1655.

[*Augmentations*, vol. 996, f. 153 : 989, 174. Lambeth Library.]

1695—1697. SAMUEL PECK, M.A., took his degree from Sidney College, Cambridge, in 1662. (Grad. Cant.) In the following year he was appointed Vicar of Prittlewell, Essex, which he resigned in 1671 for Poplar, where he was from 1670 to 1690, when he was appointed Town Preacher at S. Mary-le-Tower. Nat. Hewitson, Rector of Woodham-Mortimer, mentions in his Will, dated 1671, his daughter Ruth, wife of Samuel Peck, Minister of Poplar, and kinsman Zachariah Rogers, Minister of Much Tay. (P.C.C. Exton, 64, 67.) In 1689 Peck was preferred to the Rectory of Inworth, holding the same till his presentation to S. Matthew's, August 24th, 1695.

[Newcourt Rep., i. 463, 741, ii. 349, 474, 683. Bishop's Reg. xxxviii. 136, b.]

Mr. Peck resigned S. Matthew's in 1697, and died in 1701. His remains were laid beside those of his third wife at S. Mary-le-Tower, as appears by the Parish Register.

1694. "Mary, wife of Samuel Peck, Clerk, was buried December 20."

1701. "*Mr. Samuel Peck* was buried Martij 30."

Samuel Peck was the author of—

1. A Sermon preached at the Funeral of Sir Henry Johnson, at Poplar, 1683. 2 Cor. v. 1. London, 1684, pp. 30.

2. A New Year's Gift. Sermon on Mrs. Elizabeth Bell, aged 16 years, 1686. Eccles. xii. 17, 1687, pp. 10.

3. Sermon preached at Bury, 169 $\frac{2}{3}$, on Isaiah ix. 11.

[Davy Athenæ Suffolcienses i. f. 546.]

WILL OF REV. SAMUEL PECK.

In the Name of God Amen I *Samuell Peck* of Ipswich in the county of Suffolk, Clerk, being indisposed in body, but thanks be to God of sound and disposing mind and memory do make & ordain this my last will & Test^t in manner & form following Imprimis I give & bequeath unto my son *Henry Peck* the sum of Twenty Pounds to be paid him by my Executor within one month after the arrival of my said son Henry at the city of London, provided that he should then have attained unto his full age of one and twenty years, & return to England (he now being in the Indies). I give to my dau *Grace Gent* £20, daughter *Jane Peck* 150£ to be paid at 21, or day of marriage, also to the latter my best diamond Ring. I give to my son *Samuel Peck* for and towards binding him out an Apprentice to such trade £50 not 21 years. I give and bequeath to my sister *Tuke* £5, my sister *Brewster* £5. Itm I give to my servant *Comely* an Indian 5£ and her freedome. Itm I give & bequeath unto M^r *Henry Hale* of London, Merchant, & unto M^r *Samuel Carleton* of Poplar 20^s, I give unto the poore of the parish where my body shall be interred 40^s. I give to *Samuel Angier* Clerk Minister of S. Mary Woolnough, London, all my ms.

Dat. 25 May A.D. 1700. Prov. 19 April 1701 by oath of *Samuel Angier*.

[Somerset House Dyer. 53.]

WILL OF REV. THOMAS PECK.

In the name of God Amen. I *Thomas Peck* of Prittlewell in the County of Essex, Clerke being in health & of perfect memory doe make this my last will in manner following. First I give to *Mary* my dearly beloved wife £50 to be paid within a month, also to my dear wife my lease of the Parsonage tythes of Prittlewell & all the profits, arising from the said parsonage from the day of my death to the expiration of the lease she paying the rents. I bequeth to my son *Samuell Peck* all my Coppiehold tenements in Prittlewell paying out of it to my sonne *James Peck* £10 when 21 yrs. Also I give unto my sonne *Samuell* my hebrew Bible my Greek Testament & the large Annotations on the English Bible, & all my ms. also the Bedd, Bedstead and greene Stooles in the Parlour Chamber in the vicaridge house in Prittlewell, also to my son *Nathaniell Pecke* £30, my two daughters *Rebecca Peck* and *Sarah Peck* each £30. My brother in law M^r *Joseph Crane* of West Creting, co. Suffolk. My daus *Rebecca* and *Sarah* not 21. My son *James Peck* £30. My brother *Crane* of West Creting, to my son *James Peck* the silver cup, not 21 yrs, & Porringer that was given to my wife when we married to my Beloved brother *Samuell Peck* doctor in Phisick & wife a gold ring, My sonne *John Hale* & my sonne *Henry Hale* a ring, My son *Samuel* sole executor. Prov 12 June 1668 by oath of *Samuel Peck filii*.

[Somerset House, Hene. 86.]

PECK, OF PRITTLEWELL, CO. ESSEX. BY H. W. KING AND THE LATE COL. J. L. CHESTER, D.C.L., LL.D. (With additions.)

Robert Peck, M.A., Incumbent of Hengham,* co. = Anne, dau. of John Lau-
 Norfolk. Went to New England in 1638, and rence, Preacher of Elm-
 founded Hengham, U.S.A. Returned in 1646. ham, co. Norfolk.
 Recovered living and died in 1656.

. . . . dau. of = Thomas Peck, M.A., Vicar of = Rebecca, = Mary, dau. of Thos. Robert = Johanna, dau. Samuel = Nathaniel Rev. John Prittlewell, co. Essex, May 2, dau. of Sothebye, Rector of Peck of . . . Robin- Peck, dau. of Nathaniel Rogers, 1633. Vacated at the Act of Caley, of of Combs, Widow son, Alderman Physi- Mild- Peck. styled "the famous Prea- the Patron a beneficial lease of the Great Tithes and secur- ing the appointment of his son to the Vicarage. Will (sans date) prov. 12 June 1668 (p.c.c. Hene 86). Buried at Prittlewell, 2 June, 1668. (Par. Reg.)	Bur. at Prittlewell, 20 Oct., 1654.	Married by George Groome, Esq., J.P. for co. Suffolk, 1655. (Par. Reg. of Prittlewell.)	Sister of John Robinson, of Beach, co. Cambridge.	Essex.	Chelms- of Terl- ing, co. Essex	Anne, ux. of Capt. Mason, of Connecticut, U.S.A.	
	2	3	4	5	1 dau.	2 dau.	6 Robert

Samuel Peck, Vicar of Prittlewell afd., 27 Mar., 1663. Resigned 1671. Eldest son. Appointed Lecturer at S. Mary-le-Tower 1690. Rector of S. Matthew 1695. Bu. Mar. 30, 1701, at S. Mary-le-Tower, Ipswich.	= Mary, bur. at Prittlewell, 11 Mar., 1664. = Ruth, of Poplar, bu. Dec. 30, 1682. = Mary, bu. Dec. 20, 1694, S. Mary-le-Tower, Ipswich. (Par. Reg.)	Thomas Peck, bap. Prittlewell, 21 July, 1668. (P. Reg.)	Nathaniel living 1668	James living 1668.	Joseph, styled "gentleman" and "singleman." Bur. Prittlewell, 24 Aug., 1658. (P. Reg.)	Rebecca Bap. at Prittlewell, 8 Ap. 1649 Living 1668.	Sarah living 1668.
--	---	---	-----------------------	--------------------	--	--	--------------------

Mary, born Feb. 26, bap. 2 Mar., bur. 11 Mar., 1664, at Prittlewell. (Par. Reg.)	Abigail, born and bap. 2, bur. 11 Mar., 1664, at Prittlewell. (P. Reg.)	Nathaniel, b. June 30, 1678	James, bu. Feb. 2, 1679	Lydia, bu. Dec. 28, 1687.	Henry	Grace	Jane	Samuel. It was agreed Dec. 15, 1699, he "shall be admitted as a poor scholar in the Free School, Ipswich, upon Smart's gift," &c.
--	---	-----------------------------	-------------------------	---------------------------	-------	-------	------	---

Twins.

All mentioned in father's Will, 1700.

* Also written Hevingham and Hingham. Parish Church of S. Andrew, Hingham, by J. Barham Johnson, M.A., pp. 4, 28. Norwich: Goose. 1889.

1697. JOHN TURNER was instituted to S. Matthew February 15, 1697, the benefice having become vacant by the resignation of the last Rector.

[Liber Institutionem, Series B., f. 276. Bishop's Reg. xxviii., 151 b.]

In 1695 Turner was appointed by the Bishop to Flowton, vacant through lapse, and in 1704 to Somersham, which he held till 1717. On the outside of the South Wall of Somersham Church is a tablet.

M. S. I^{nis} Turner Cl.
 Qui hujus Rectoriæ Ædes
 et Hortos invenit squalidos
 Nitidos reliquit Martii 13^o
 1717/18.

1704—1713. Thomas Cornwallis.

In 1709 it was agreed by the Churchwardens to pay him ten shillings per annum that they might have the whole of the Grass growing in the churchyard.

[His handwriting in Parish Registers apparently begins in 1704 and ends 1713. Probably Curate in Charge.]

1713. CHARLES PORTER was instituted 3 June, 1713.

Porter as well as Coleman and Leedes are omitted by

Wodderspoon. *usher of Ips. School. 5 Jan. 23 Feb. 1713/4*

[Norwich, xxix., 79.] *resigned as incapacitated for duties. (see Gen. Court Book. 3 Feb. 1712)*

1722—1727. JOSEPH COLEMAN instituted July 24, 1722.

[Norwich, xxix., 206 b.]

1727—1744. EDWARD LEEDES, M.A., took his degree from Peter house, Cambridge, in 1703, and that of M.A. in 1707. He was son of Edward Leedes, Master of the Grammar School at Bury St. Edmund's, the author of several works, mostly Grammars, designed for his scholars. His son Edward also took up educational work, being elected Master of the Ipswich Grammar School in 1712. This he resigned in 1737.

[Davy's Ad. ms. 19,094, 71.]

In 1718 he was appointed vicar of Wherstead, and on the 15th of August, 1727, Rector of S. Matthew's, and held both these benefices till his death, May 18, 1744. He was buried at Wherstead where he resided.

WHERSTEAD PARISH REGISTER.

M^{rs} Anne Leedes wife of M^r Edw^d: Leedes, Vicar, bur^d 9 Dec. 1739.

Edward Leedes, Vicar 1719. Bur^d 21 May 1744.

ON THE DEATH OF REV. MR. LEEDES, LATE OF WHERSTEAD, SUFFOLK.

If real merit claims the muse's care,
Or bids to fall the tributary tear;
To thee, blest shade a plaintive song we owe,
Thy name shall teach the weeping verse to flow,
And pay, in pious sadness, what is due
To father, friend, to virtue, and to you.

[*Gent. Mag.*, 1744, xiv., 331. *Lond. Mag.*, June, 1744, p. 303.]

His Will informs us he was brother to Samuel, rector of Little Saxham, where his arms appear on a stone in the chancel: A fess between three eagles displayed. Crest: a cock.

[Pedigrees of the family seem involved. Davy 19, 108, 19, 166, 19, 169. Cole ms. 58, 12, xi., 59, 202, 220. History of Suffolk, J. Gage, 161. Wherstead, F. B. Zincke, 233. *Gent. Mag.* 1829, i., 2. *Ipswich Journal*, 1744, May 19. Bishop's Register xxix., 130, 292.]

WILL OF EDWARD LEEDES.

April ye 8, 1744, I *Edward Leedes* Vicar of Wherstead in the County of Suffolk do make this my last Will and Testament first I give and bequeth to my cousin M^r Edward Leedes of Debenham Surgeon All my Lands Copyhold and free lying and being in Little Bealings in the County aforesaid Also I give and bequeath to my cousin M^{rs} Elizabeth Leedes now living with me the sum of Twelve pounds a year to be paid her yearly out of the estate of Bealings for ever Also I give to my cousin M^{rs} Dorothy Leedes 8 pounds a year to be paid yearly, Also I give and bequeath to my brother M^r Samuel Leedes Rector of Saxham the sum of fifty pounds. Also I give to my sister M^{rs} Ann Gardiner of Norwich the sum of fifty pounds, Also I give to my sister M^{rs} Bridget Short £200, Also I give to M^{rs} Susan Smythies daughter of the Reverend M^r Palmer Smythies of Colchester 240£, Also I give and bequeath to M^{rs} Ann Smythies sister to M^{rs} Susan Smythies 250£. These two last legacies to be paid out of the money that is in M^r Westhorp hands, Also I give and bequeath to M^{rs} Mary Leedes sister to M^r Edward Leedes aforesaid the sum of twenty pounds, Also to M^{rs} Elizabeth Leedes aforesaid 50£ Also to M^{rs} Katharine Leedes 30£, also

to Mrs Dorothy Leedes aforesaid £20. Also I give and bequeath to Mr Edward Leedes aforesaid the silver Tankard the silver Cup and Cover marked C R and J. R, the four silver salts with the little spoons All the rest of the plate I give to Mrs Elizabeth Leedes aforesaid And I make Mr Edward Leedes Surgeon aforesaid Executor and Mrs Elizabeth Leedes aforesaid executrix to both which I give and bequeath whatsoever I have not disposed of in this will thereof desiring them to see that last Will and Testament of mine duly executed and to pay all my just debts and legacies and so revoking all former wills I have to this my last Will set my hand and seal the day and year above written Edward Leedes, signed sealed published and declared to be the last will in the presence of Nathl Hudson, R. Hudson, John Cuckow.

This Will was proved at London June 5, 1744 by Edward Leedes and Elizabeth Leedes, spinster, the executors. [P. c. c. Anstis. 152.]

MONUMENT AT WHERSTEAD.

On floor near the door.

M.S.

ANNÆ LEEDES

Femina raræ pietatis
Mente humili & sincerâ
Animi assiduâ affectione

Deum coluit
de suis, de pauperibus
Bene meruit
de Conjuge optime

Obiit Dec : 5 Anno { Ætat : 54
Dom : 1739

Memoriæ etiam Sacræ

EDWARDI LEEDES

Hujusce Ecclesiæ Vicarii :

Necnon

Scholæ Publicæ Gippovicensis

Magistri olim Eruditi :

Viri omni virtute Beati

Integri Vitæ, Integri Amicitia.

Largâq manu—uis Benefici :

Quem

Vivum piâ reverentiâ dileximus

Mortuum pio fletu ploramus

Obiit Maii 18. Anno { Dom : 1744.
Ætat : 60.

1744—1772. ANDREW LAYTON, M.A., was descended from an ancient family of that name, at West Layton in Yorkshire. He graduated at Trinity Hall, Cambridge, taking the degree of B.A. in 1740, and

that of M.A. in 1749, and was presented to S. Matthew's July 5, 1744. He was also vicar of Chatteris in the Isle of Ely, which he enjoyed for twenty-three, and S. Matthew's for twenty-eight years. Besides these he held the curacy of Culpho, to which he was preferred in 1767.

Mr. Andrew Layton was married at S. Matthew's church in 1749 to Miss Beart, by whom he had three sons and two daughters. He died May 23, 1772, at the age of 52, and lies buried beneath the east window in the churchyard. There is a tablet in the church in memory of Andrew Layton, his son William, who afterwards succeeded to the benefice, and daughter Marianne.

The Arms over the Tablet are :—

Arg : A fess between six cross-crosslets fitchée, sa.

[*Gent. Mag.*, xiv., 395 ; XLII., p. 295 ; *Ipswich Journal*, May 30, 1772 ; *Lond. Mag.*, 1744, p. 367. Bishop's Register, xxx., 116. Ipswich Inscriptions, S. Matthew's, p. 8.]

S. MATTHEW'S PARISH REGISTER.

MARRIAGE.

1749. "The Revd. *Mr. Andrew Layton*, Rector of St. Matthew's, single Man, and *Elizabeth Beart* of St. Mary at Elms Parish, single Woman, were married, by Licence, April 27th.

BAPTISMS.

1760. Joseph Midgley, Son of the Revd. Mr. Andrew Layton & Elizabeth his wife born Novem^r. the 9th 1759 & baptised Dec. ye 6th. following.
1761. Charlotte D^r. of Andrew & Eliz. Layton. August 12.
1763. Marianne Daughter of the Rev^d. And. Layton & Elizabeth his Wife was baptised March 9.

BURIALS.

1750. John, Son of The Rev^d. Mr Layton and Elizabeth his Wife, was buried September 22^d.
1760. Joseph Midgley, Son of Andrew Layton Cl. the 27th Oct.
1761. Charlotte Layton, Inft. Sep. 6.
1772. *The Rev^d. Andrew Layton, A.M. Rector of this Parish May 26.*
1831. *William Layton Rector of this Parish 56 years. Buried Feb. 25 oct. 81.*
1844. Marianne Layton, St Mary Elms, Ipswich Feb. 2^d. 81.

On a Table Monument in the Churchyard, Chertsey.

To the Memory of
 Mrs. Sarah Layton
 daughter of
 the Rev^d. Andrew Layton, M.A.
 formerly Rector of
 St. Matthew, Ipswich,
 who died May 7th. 1817,
 aged 60 years.

[Add. ms., 19,094., II., 99.]

Mrs. Lowthian, eld. da. of Rev. And. Layton, and wife of Rev. Joseph Lowthian, M.A. Vicar of Thatcham, Berks died 1836, æt 83. (*Gent. Mag.* 1836, 443.) Rev. Joseph Lowthian, Vicar of Thatcham, 1842. He married in 1796 Elizabeth the eldest dau. of Rev. Andrew Layton. (*Ipswich Journal* March 5, 1842.)

WILL OF REV. ANDREW LAYTON.

I *Andrew Layton* of Ipswich Clerk first I give lands &c in Stead near Ottley or Towns adjoining in the W. Riding of Yorkshire to my son *William Layton* of Trinity College, Cambridge, my estate in Winston, Suffolk to *Elizabeth Layton* my beloved wife and after her decease to my three daughters *Elizabeth, Sarah, and Mary Ann Layton*, my plate amongst my four children. My wife Elizabeth and son William, executors. Dated 20 May 1772. Proved 10 June 1772.

[P. c. c. Taverner, 221.]

1772—1775. JOHN KING, M.A., Fellow of Peter House College, Cambridge, was born at Richmond, in Yorkshire. He proceeded to the degree of B.A. in 1760. He soon, however, relinquished residence in college, having been appointed under master of the Grammar School of Newcastle-upon-Tyne. In this situation he continued seven years. The Lord Chancellor Eldon, and his brother, Lord Stowell, both received their education here while Mr. King was the under master. To this circumstance he probably obtained the rectory of S. Matthew's in the gift of the Chancellor. In 1767 he removed from Newcastle to Ipswich, having been appointed master of the Grammar School, on the recommendation of his old friend and preceptor, Mr.

Temple, to whom the school committee had written, through the Rev. Andrew Layton, A.M. (whose sister Mr. Temple had married), to point out a person qualified to fill that situation. He was instituted to S. Matthew's June 11, 1772, and in 1776 presented by his college to the rectory of Witnessham. In 1798 his health compelled him to resign the mastership of the school, and he retired to Witnessham, where he closed his earthly career January 26, 1822, in the eighty-fourth year of his age. His remains are interred in the chancel at Witnessham.

[Davy's Add. ms. Brit. Mus. 19,086, 422. Athenæ Suffolcienses III., 209. Add. ms. 19,157. Annual Register, 1822, p. 267. *Gent. Mag.*, LXXXIV., i., 97, 206; 1822, Feb. 1, 183^d—185. *Lond. Mag.*, 1772, 294. Nichol's Illustrations of 18 Cent., v., 125. Miller's Biog. Sketches, I., 161. *Ipswich Journal*, Feb., 1767; Oct., 1768; June 6, 1772; Jan., 1776. Suffolk Traveller, sup. by A. Page, 77.]

John King was married at S. Margaret's church, Ipswich, June 10, 1777, to Elizabeth Sarah, the only daughter of the Rev. Thomas Bishop, B.A., rector of Trimley, and perpetual curate of S. Mary-le-Tower. He had by her nine sons and one daughter, but lost five of these sons during his life.

Rev. John King's name is found as a subscriber for the purpose of building a ship of war, pursuant to a meeting held at Stowmarket, August 5, 1782.

[Tract in Library at Bury.]

MONUMENT AT WITNESHAM.

M.S.

ELIZABETHÆ SARAE KING
 Rev^{di} JOANNIS KING uxoris
 et rev^{di} THOMÆ BISHOP
 unicæ filiæ et hæredis.
 obiit die trigesimo Decembris
 A.D. 1813, ætatis suæ 61.
 nulla ferè, sive uxor, sive parens,
 omnibus magis præcellebat virtutibus

nec liberis ejus fuit carior,
 imò jure fuit cara discipulis,
 quos viginti per annos
 summâ alebat curâ et sedulitate
 apud Gippovicenses.

In the same Vault
 rests the Body of her Husband
 The Rev. JOHN KING, A.M.
 formerly Fellow of St. Peter's College, Cambridge.
 He was born at Richmond, in Yorkshire,
 April 28, 1738,
 was twenty-three Years Lecturer to the Corporation
 of Ipswich,
 thirty-one Master of the Grammar School there,
 and forty-six Rector of this Parish.
 He died January 26, 1822, aged 83.
 His surviving Children
 consecrate this fragile Record to his Memory.
 Mater amantissima, optime Pater,
 Valeatis.

CHILDREN OF JOHN KING.

John King, b. 16 May, 1778, bap. June 28, at Winesham, d. 24 Oct., 1815, bu. at Winesham. M.I.

Thomas, bap. there 27 June, 1779, d. 1 Aug., 1782, bu. at Winesham.

Carew, bap. there 12 July, 1780, d. 1 June, 1781, bu. at Winesham.

Robert Carew, surgeon of Saxmundham, Suffolk, m. Harriet, only da. of John Weddall, of Selby, Yorks.; b. 5 July, 1781, bap. at S. Mary Key church, Ipswich, d. 20 Dec., 1842, s.p., bu. at Saxmundham.

George, surgeon, E. I. Co. service, married . . . ; b. 19 Dec., 1782, d. 9 March, 1845, bu. at Brighton.

Elizabeth, b. 31 Aug., 1784, d. 1858.

William, M.D., Fellow of S. Pet. Coll., Camb., b. 23 Apr., 1786, and bap. same day at S. Mary Key church, d. 1865.

Charles, Lieut. R.A., b. 13 Sep., 1788, d. 22 Feb., 1813. M.I. at Winesham. Was a brave man, and wounded in battle near Fort Detroit, Upper Canada, bu. at Niagara. [*Ipswich Journal*, 12 June, 1813. *Gent. Mag.*, LXXXIII., i., 660. See *Ipswich Journal*, 17/7/1813.]

Richard Henry, Rear-Admiral, R.N., b. March, 1790, d. 1862.

Edward, surgeon, E. I. C., died in camp 212 miles from Madras, b. Feb., 1792, d. 14 Aug., 1817, æt. 25, bu. at Jaulnah, Madras, lat. 20°, long. 76°. [*Ipswich Journal*, Jan. 31, 1810.]

IN CHURCH OF S. MARY-LE-TOWER, IPSWICH.

M.S.
 JOANNIS . KING . A.M.
 COLLEGII . DIVI . PETRI
 APVD . CANTABRIGIENSES
 SOCII
 ECCLESIAE . DE . WITNESHAM . IN HOC . AGRO
 RECTORIS
 ET . PER . ANNOS . XXIII . APVD . GIPPOVICENSES
 PUBLICI . CONCIONATORIS
 QVI
 JVVENTVTIS . INSTITVENDAE . PERITISSIMVS
 SCHOLAE . REGIAE . PER . ANNOS . XXXI
 SVMMA . CVM . LAVDE . PRAEFVIT
 EX . HOC . LABORE
 QVAM MAGNAM . COLLEGIT . GRATIAM
 ET . QVO . JVRE . PALMAM . QVAM . MERVIT . TVLIT
 ABVNDE . TESTANTVR . DISCIPVLI
 E . QVIBVS . SEPTVAGINTA . PLVS . MINVS
 IN . AEDIBVS . SVIS . SIMVL . ERANT . ACCEPTI
 VIXIT . ANNOS . LXXXIII
 DECESSIT . VII . CAL . FEB . MDCCCXXII.

Arms above:—King: Sa. a lion rampant, arg. crowned or. between 3 cross crosslets of the 2^d.

Crest: a demi lion rampant, crowned or. holding in his paws

S. MARY KEY.

In Memory
 of Robert King, late of
 Richmond, Yorkshire;
 who died Jan^{ry} 19 1793
 Aged 81.

Also of
 Eleanor his Wife who died
 June 17. 1792
 Aged 80.

(The Parish Register has "Robert King, Widower, son of John King and Isabella his wife, late Isabella Greathead, spinster. Eleanor the wife of Robert King, late Eleanor Foster, spinster.")

The Rev. John King was author of:—Sententiæ ex diversis auctoribus excerptæ et primis Linguae Latinæ tyronibus accommodatæ, operâ Johannis King A.B. apud Novocastrenses sub Præceptoris. Newcastle. 1761.

A Sermon preached at Witlesham, on account of our late Naval Victories. Ipswich. 1798.

A Sermon on the Catholic Claims, with notes and a postscript. Ipswich. 1813.

[Obituary of John King, by W. Layton, *Gent. Mag.*, 1822, 183. Davy, 19,086, 424; 19,167. Wodderspoon, 377. Annual Reg. 1822, 267-8. Nicholas Illus., vol. v., pp. 125-6. Miller's Biog. Sketches, i., pp. 161-2. Brand's Hist. of Newcastle, vol. II. Bishop's Reg. xxxi., 74, 110.]

1775—1831. WILLIAM LAYTON, M.A., son of Andrew Layton, was born at Sproughton. He was rector of S. Matthew's, and also Helmley, for the long period of fifty-six years.

Mr. William Layton's education commenced under the tuition of his uncle, the Rev. Anthony Temple, master of Richmond School, Yorkshire. After having been there nine years he was removed to S. Paul's School, London. With an exhibition from the latter school he was entered a pensioner, at Trinity College, Cambridge, where he took the degree of B.A. in 1773, and that of M.A. in 1776.

[Bishop's Register, xxxi., 108. *Ipswich Journal*, Feb. 26, May 7, 1831. Davy's ms. 19,086, 345; 19,094, 99. Annual Obituary, 1832, vol. xvi., 452. Suffolk Traveller. *Gent. Mag.*, 1775, XLV., 551; 1831, ci., i., 373. Suffolk Garland, 1866, 20, 183.]

The signature of Wm. Layton occurs in the registers in 1772 and 1773, as "clerk" and "curate."

Mr. Layton was licensed to the perpetual curacy of Playford, in 1774, and instituted to S. Matthew's and Helmley, Nov. 17, 1775. Service was conducted once on a Sunday at S. Matthew's, once a fortnight at Playford; and once a fortnight at Helmley and Newbourn. William Layton made topography and antiquities a special study. Lord Chedworth entertained a high regard for him, and by his Will left both him and his sister, Miss Layton, £1,300 each. William Layton resigned Playford in 1826, and died a bachelor, at his residence, in S. Mary Elms, February 19, 1831, at the ripe age of four score years. He is buried in the same vault with his father and sister.

In 1799 a garden, formerly glebe, about half an acre, in S. George's Lane, was exchanged with Charles Manners

(Sutton), Bishop of Norwich; and on June 16, 1801, this prelate (afterwards Archbishop of Canterbury), consecrated a piece of ground, formerly glebe land, but exchanged Feb. 2, 1799, with Mr. Robert Stones Durham, containing 1a. 1r. 36p. as an additional burial ground to the churchyard of this parish.

[A Memoir of Thomas Green, was dedicated to Rev. W. Layton. 1825. Supplement to Suffolk Traveller, by Augustine Page, 1844, 28. *Gent. Mag.*, vol. ci., i., 373, pub. 1831. Obituary, by James Ford.]

FAMILY NOTES BY W. LAYTON.

Mr. Robert Layton, attorney, of Staple Inn, London, died at Hendon, Oct. 2, 1754, was buried 9th, in S. Andrew's church, Holborn.

His son, Daniel Thomas, was born Aug. 28, 1752.

His son, Joseph William, was born July 28, 1754.

Mrs. Elizabeth Layton died July 23, 1765, æt. 72.

Mrs. Temple died Jan. 11, 1766.

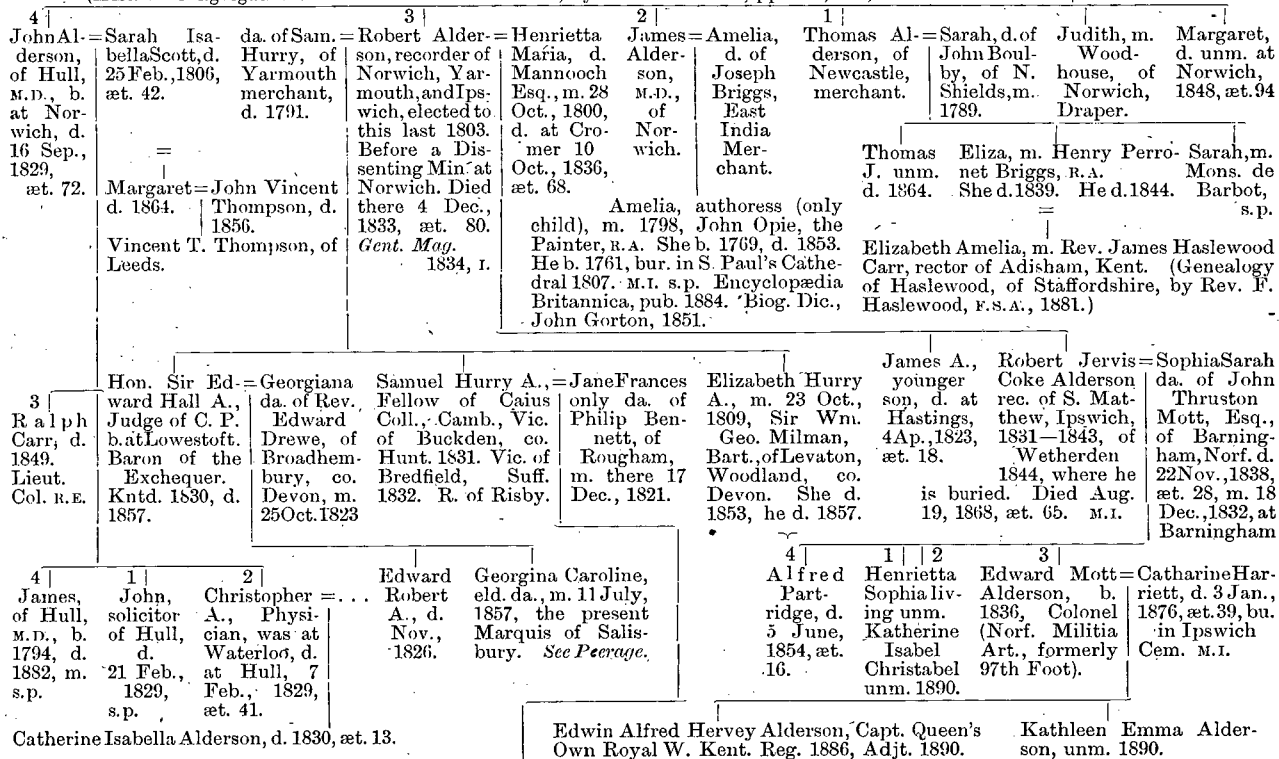
My nephew, Joseph William Layton, went to E. I. on board "Valentine," Capt. Purvis, Comr., Dec. 22, 1769.

My nephew, Daniel Thomas Layton, went on board "Greenwich," Capt. Carr, at Gravesend, Feb. 12, 1770, on his second voyage to Bombay. 1795. My brother died Ap. 23, George Philip.

1831—1843. ROBERT JERVIS COKE ALDERSON, M.A., was the third son of Robert Alderson, Recorder of Ipswich, Yarmouth, and Norwich. After being educated at Charter House, he matriculated in 1820, at the age of 18, and graduated from Exeter College, Oxford, taking his degree of B.A. in 1825, and that of M.A. in 1827. (Foster's Alumni. Ox.) He was ordained Priest in Norwich Cathedral October 21, 1826, his first curacy being S. Giles, in that city. On the last day of March, 1831, he was instituted to the Rectory of S. Matthew's. He was also Rector of Baconsthorpe with Bodham, from 1832 to 1838. (*Brit. Mag.* 1832, II., p. 95,325. *Ipswich Journal*, Nov. 10.) These latter he held with S. Matthew's. Here he established a Sunday School, and his generosity to the children and aged is mentioned in the *British Magazine*. In 1832 he married Sophia Sarah, daughter of John Thruston Mott, Esq. From 1843 to 1844 he was Rector of Kirton, Suffolk, where he built the vicarage, though he never resided therein.

PEDIGREE OF ALDERSON. Davy's Suffolk Collection, Ad. ms. 19,114. (With additions by Rev. F. Haslewood, F.S.A.)

James Alderson, a Presbyterian Minister at Lowestoft, d. 21 May, 1760, æt. 46: bu. at Ravenstonedale. =
 (Hist. of Congregationalism in Norfolk and Suffolk, by Robert Browne, pp. 281, 391, 530.)



Rev. James Thomas Alderson, B.A., rector of Ravenstone, near Ashby, in 1855, formerly curate of Risby, 1847; Denham, Suffolk, 1848—50; Great Saxham, 1850—1855; was hon. canon of Southwell, and 35 years rector of Ravenstone. Died 27 Jan., 1890, aged 64.

RECTORS OF ST. MATTHEW'S, IPSWICH.

Mr. Alderson died Aug. 19, 1868, and was buried in the chancel of Wetherden.

BRASS PLATES IN WETHERDEN CHURCH, SUFFOLK.

ROBERT IERVIS COKE ALDERSON,
DIED AUGUST 19TH A.D. 1868.
AGED 65 YEARS.

ALFRED PARTRIDGE ALDERSON,
DIED, JUNE 5TH A.D. 1854.
AGED 16 YEARS AND 6 MONTHS.

Mr. Alderson exchanged land belonging to the glebe, in the parish of S. Matthew's, known as the "Lower Mill Field," containing 7 acres & two roods for the house called Handford Lodge, together with the offices, stable, coach house &c & garden thereto.

[Davy, Add. m.s. 19,094, II., 101; Bishop's Register xxxiii., 125. *Gent. Mag.* 1831, cl., i., 364; 1843, xix., 196. *Brit. Mag.* 1842, 714. Life of Baron Alderson, by Charles Alderson, pub. 1858. Clarke, Hist. of Ipswich, p. 246.]

1843—1847. GEORGE PELOQUIN GRAHAM COSSERAT, M.A., the eldest son of Rev. George Pelouquin Cosserat, of Bamford Speke, Devon, afterwards rector of Drinkstone, graduated from Exeter Collegè, Oxford, taking the degree of B.A. 1839, and M.A. in 1846. He was instituted to the rectory of S. Matthew's, January 26, 1843. Upon quitting Ipswich in 1847, he proceeded to Abbott's-Kerswell, South Devon; and in 1851 was appointed rector of Winfrith-Newburgh. Mr. Cosserat established the National Schools in 1844, and effected an exchange of houses, the old rectory being in the parish of S. Peter's, and known as Handford Lodge, which he exchanged for the present glebe house on the Norwich Road.

Mr. Cosserat married late in life, in 1885, Lady Anne, sister of the Earl of Leitrim; and widow of Henry Augustus Murray, Esq., of 79th Highlanders (see peerage). The Rev. G. P. G. Cosserat died at Winfrith Rectory, Dorset, July 28, 1889, aged 73.

He was author;—of *Baptismal Regeneration*, a Sermon, 1845. *Sermon on Saying and Doing*, 1847. *A Sermon on Worship*;—Private, Family, Public: preached in church of Tor Mohun, Devon. Phil. iv. 6. 1847. *A Letter to the Bishop of Exeter on Catechising*. Exeter. 1849.

ON GRAVESTONE AT WINFRITH.

Sacred
to the memory of
the Rev^d. George Peloquin
Graham Cosserat
For 38 years Rector
of this Parish
who died
on the 28th day of July 1889
Aged 73.

"In Christ shall all be made alive." 1 Cor. xv. 22.
[Bishop's Register, xxxiv., 9. Foster Alumni. Oxford.]

1847—1875. CHARLES HICKS GAYE, M.A., was educated at S. John's College, Cambridge, where he took his B.A. degree (8th Sen. Opt.), 1825; and M.A. 1830. He was ordained deacon 1829, and priest by the Bishop of Peterborough (Herbert Marsh), 1830. His first curacy was that of Thornhaugh with Wansford, where he remained two years; when he removed to Christ Church, Blackfriars. In 1833 he accepted the curacy of S. James', Westminster, held until 1836, when he was appointed reader and evening preacher at Abp. Tenison's chapel, which position he occupied till 1847, when he came to Ipswich, being instituted to the rectory of S. Matthew's, on the 23rd December in that year.

Mr. Gaye remained rector of this parish till March 22, 1875, when he was instituted to the vicarage of Swilland, where he died, January 16, 1882, aged 78.

Mr. Gaye was thrice married. *Frances*, his first wife, died July 24, 1832, in London, having two days before lost her only child, a boy, in the seventh month of his age.

Jane Trimmer, eldest daughter of H. Howard, R.A., to whom he was married June 18, 1839. She died in 1852.

Elizabeth, youngest daughter of Thomas Shuttleworth, married at S. Mark's, Kennington, April 25, 1855.

[*S. James' Chronicle*, Jan., 1848. *Gent. Mag.*, xii., 196, 1839; xxix., 189; cii., ii., 186, 1832. 1855, p. 638. Bishop's Register, xxxiv., 54; xxxv., 73. *Ipswich Journal*, Jan. 12, 1850; Jan. 1, 1853; Ap. 8, 1854; May 18, Nov. 23, 1866.]

CHILDREN.

Gerrard Gaye married 8 Feb. 1875, at S. Peter's Church, Brighton, Margaret Sophia Simpson, widow of the late Charles Simpson, Esq., Preston, Lancashire.

Arthur.

Margaret, d. Nov. 23, 1866, æt. 23 yrs., bu. in Ipswich Cemetery. M. I. second dau. & third child of Rev. C. H. Gaye, and Jane Trimmer.

PARISH REGISTERS OF S. MATTHEW'S, IPSWICH.

Howard, son of C. H. and Jane T. Gaye, b. 15 Sep. bap. 17 Oct. 1848.

Rev^d. *Herbert Charles*, son of Charles Hicks & Elizabeth Gaye, b. March 12, bap. 6 May, 1856, ordained 1881, Curate of Cobham, Surrey, Formerly C. of Carlton-Colville, Suffolk, 1881-85.

Leonard, bap. April 8, 1858, d. 18 May 1866, bu. in Ipswich Cem. M. I.

Maurice baptized April 10, 1860. (Drowned.)

Katharine b. 20 Jan. bap. Ap. 23, 1862, d. Ap. 15. 1875. Drowned, bu. at Swilland. M. I.

Wilfrid, bap June 12, 1863.

Ernest bap. October 18, 1865.

BURIAL.

1852. "*Jane Trimmer Gaye*. S. Matthews. Dec. 30th: 44."

SWILLAND CHURCHYARD.

Sacred

to the beloved memory of the

REV^d CHARLES HICKS GAYE, M.A.

nearly 7 years rector of this parish,

also 28 years rector of

St MATTHEW'S, IPSWICH, and rural Dean,

born March 3^d 1804,

died January 16th 1882.

"Well done, thou good and faithful servant:

Enter thou into the joy of thy Lord."

Mat. xxv. 21.

PUBLICATIONS BY REV. C. H. GAYE.

Irish Famine, a special occasion for keeping Lent in England. A Sermon. 1847.

The General Fast: in prospect and retrospect. Two Sermons. 1847.

The Christian's "Continuing City." A farewell Sermon preached at Abp. Tenison's chapel. London. 1847.

Equality, how and how far to be realized among Christians. A Sermon preached in S. Matthew's Church, during the prevalence of Small Pox, when corpses for the safety's sake of the living, were debarred admittance within the church, and consigned for the like cause to a twilight grave, a season of unprecedented mortality in this Parish. 1849.

Christ's Headship of the Church. A Sermon. 1850.

Preface to a letter by Jane Trimmer Gaye written in 1847, entitled "She, being dead, yet speaketh." Printed after the death of Mr. Gaye's second wife as a memorial of her, dated Easter, 1853. pp. 8.

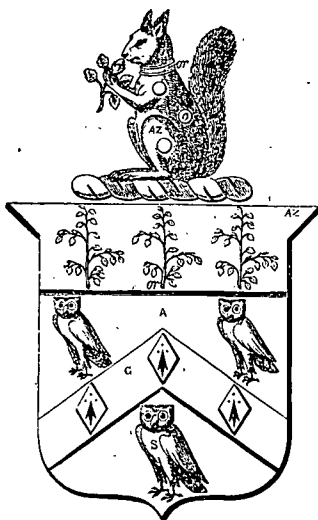
Fold and Temple. Two Sermons. 1859.

Destitution of Clergymen's widows and orphans. A Sermon. 1863.

1875. FRANCIS HASLEWOOD, A.K.C., F.S.A., younger son of the late Rev. F. F. Haslewood, M.A., was educated at Marlborough College, Wilts, and King's College, London. Deacon 1863; priest 1864. Formerly curate of S. Peter ad Vincula, Tower, 1863-1864; S. Mary's, Bryanston Square, 1864-66; S. Luke's, Marylebone, 1866-68; Benenden, 1868-75. Instituted to S. Matthew's, May 19, 1875.

[Bishop's Register, xxxv., 76.]

Francis Haslewood, the present Rector, was married in 1866 to Frances Ellen Henderson, by whom he had eight children. Mrs. Haslewood died April 24, 1890, and was laid to rest in Ipswich Cemetery.



Quod me mihi reddit amicum.

Arms were granted to the Family of Haslewood by Christopher Barker, in the time of Henry VIII. The motto is borrowed from Horace (Book I., Epistle xviii., 101.)

For Genealogy of Haslewood, see "Memorials of Smarden, Kent," by Rev. Francis Haslewood.

CURATES OF ST. MATTHEW'S.

1817. Nov. 16. JAMES ORFORD.
1833. July 23. WILLIAM HALL GRAHAM.
1845. JAN. 27. ARTHUR DAVENPORT.
1852. Nov. 22. RALPH HOLLERTON.
1856. Sep. 30. GEORGE BOND.—Preferred to Vicarage of Farnworth, Widnes, 1881.
1860. June 4. THOMAS HENRY WALLER.—Appointed Rector of Waldringfield, Woodbridge, 1862.
1863. May 25. ALFRED NAUNTON BATES.—Promoted to the Vicarage of Humberstone, 1886.
1865. June 12. JOSEPH HENRY THOMPSON.—Vicar of Datchet. Formerly Canon of Montreal, Canada. On leaving Ipswich he took the Curacy of Windsor.—(*Ipswich Journal*, Oct. 6, 1866.)
1866. Oct. 26. RALPH ST. LEGER BROCKMAN.—Was instituted to the Vicarage of Brightwell, with Kesgrave, Oct. 6, 1869. Died 19 Dec., 1884.
1869. Feb. 5. WILLIAM JAMES BETTISON.—Preferred to the Vicarage of Leytonstone, 1874.
1871. Feb. 23. JAMES JOHN DANIELS.—Appointed Rector of Beckbury, Dio. Hereford, 1882.
1876. April 18. CHARLES JOHN STOWER.—Promoted to the Vicarage of All Saints, Sudbury, 1876. Preached his farewell sermon at St. Matthew's, Ipswich, Jan. 21, 1877.
1877. May 9. RICHARD HUTTON CAUTLEY.—Appointed Organizing Secretary of the Church of England Sunday School Institute, 1887.
1885. Mar. 13. WALTER BOYCE.—Elected Head Master of King's Lynn Grammar School, July, 1887.
1887. Feb. 21. JOHN SHELDON JONES.—All Saints' Church, foundation laid June 16, 1886, consecrated June 9, 1887.
1878. Mar. 14. HENRY VENN HEBERT.—Appointed Vicar of Sevenhampton, Cheltenham, 1880.
1878. Dec. 23. ARTHUR HERBERT HAYES.—Ordained Deacon 1878, Priest 1879, by the Bishop of Norwich. Published a Sermon, entitled "Will the State rob God?" on the payment of Tithes, showing that the Tithe system was not created by the State. Preached in St. Matthew's Church, Ipswich, October 25, 1885.—[pp. 8, 12mo.]

TITHES IN THE PARISH OF S MATTHEW, IPSWICH.

Grant to William Webb and William Breton of Tithes in the parish of S. Matthew, Ipswich.

Rex Omnibus ad quos etc. Salutem. Sciatis quod nos pro summa Mille trecentarum triginta vnus librarum octodecem solidorum et vnus denarij legalis monete Anglie per dilectos nobis Wifm Webb Armigerum et Wifm Breton de London Generosum ad manus Edmundi Peckham Militis ad vsum nostrum persoluē de qua quidem summa fatemur nos plenarie esse satisfactos et persolutos eosdemque Wifm Webb et Wifm Breton heredes et executores suos inde acquietatos et exoneratos esse p̄sentes de gracia nostra speciali ac ex certa sciencia et mero motu nostris dedimus et concessimus ac per presentes damus et concedimus prefatis Wiffo Webb et Wiffo Breton totum illud Manerium nostrum de Bussheton in comitatu nostro Wiltē, cum suis Juribus membris et pertinencijs vniversis nuper parcelam terrarum et possessionum Thome Seymour domini Seymoure de Sudeley de alta prodicione attincti. et convicti existeñ

neon omnes illas decimas garbarum et granorum provenientes crescentes et renovantes infra villam Gippiwici in Comitatu nostro Suffolcie et in parochijs sancti Petri sancti Nicholai sancte Marie ad clavem et sancti Mathei in dicta villa Gippiwici ac modo vel nuper in tenura sive occupacione Wiffo Lawrence vel assignatorum suorum nuper Prioratui sancti Petri Gippiwic quondam spectantes et pertinentes ac nuper parcelam terrarum et possessionum Thome Wolcey nuper Cardinalis attincti existeñ Aceciam vnam donum et tenementum vocat le church house cum pertinencijs in Shepton Beauchampe in Com̄ s̄ro Somersetensi

Habendum tenendum et gaudend̄ predicta Maneria Rectorias capellas Mesuagia terras tenementa prata pascuas pasturas redditus reversiones servicia boscos sub[b]oscōs Curias letas visus franci plegij decimas oblationes ac cetera omnia et singula premissa cum eorum pertinencijs vniversis (exceptis * pre exceptis) prefatis Wiffo Webb et Wiffo Breton ac heredibus et assignatis suis imperpetuum ad solum et proprium opus et vsum ipsorum Wiffo Webb et Wiffo Breton ac heredum et assignatorum suorum imperpetuum tenend̄ p̄dicti Maneria de Bussheton et Wolfrelowe de nobis hered̄ et suc̄c̄ s̄ris in capite per servicium Militare videlicet p̄ servicium vicesime partis vnus feodi Militis Ac tenend̄ p̄dicti Rectorias capellas Mesuagia terras tenementa decimas ac cetera omnia et singula p̄missa preter p̄dicti Maneria de Bussheton et Wolfrelowe de nobis heredibus et successoribus nostris vt de Manerio nostro de Estgrenewiche in Com̄ s̄ro Kancie in libero et communi socagio per fidelitatem tantum et non in Capite pro omnibus redditibus servicijs et demandis quibuscumque

Et vltius volum̄ q̄ pro consideracōe p̄dca ac ex certa sciencia et mero motu s̄ris pro nobis heredibus et successoribz s̄ris p̄sentes concedim̄ §

* i.e., certain advowsons, bells, and lead.

βfat Wiffo Webb ꝛ Wiffo Bretoñ ac heredibꝫ ꝛ assignatis suis qđ nos heredes ꝛ successores nri imppetuū annuatim ꝛ de tempore in tempore acquietabimus exonerabim ꝛ indempnis conservabim ꝛ tam eosdem Wifm Webb ꝛ Wifm Bretoñ ac heredes ꝛ assignatos suos quam predicta premissa cum eoꝝ ptiñ vniꝛsis versus nos heredes ꝛ successores nros ꝛ vsus alias quascunqꝫ psonas ꝛ aliam psonam quamcunqꝫ de omnibꝫ ꝛ singulis corrodijꝫ redditꝫ feodis annuitatibꝫ pencionibꝫ porcionibꝫ ꝛ denarioꝝ summis ꝛ oneribus quibuscunqꝫ de βmissis seu de aliqua inde parcella quoquo modo exeun seu solvend vel superinde onerāt seu onerandis preterquam de servicio nobis p presentes superius reservāt ac pꝛqam [demises ꝛ grants made for terms of life or years, sundry payments] ac de tribus libris annuatim solutis Capellano divina celebranti in ecclesia sꝫi Petri βdicꝫ ville Gippiwič pro salario sive stipendio suo ac de quindecim solidis ꝛ decem denarijs annuatim solutis archidiacono Suff p ꝑcurač ꝛ sinodalibꝫ βdicꝫ eccliaꝝ sꝫi Petri ꝛ sꝫi Mathei βdicꝫ ville Gippiwič
Acceiam volumus etc. Eo quod expressa mencio etc. In cuius rei etc. T. R. apud Westmonasterium xxiiij die ffebruarij.

per breve de privato sigille etc.

N.B. The dots denote the omission of:—1. irrelevant matter, 2. mere legal repetition. *All* that relates to S. Matthew's, Ipswich, is here extracted. Verified 18 July, 1888.

Patent Roll 7 Edward vi. Part 7 m. 27.

PATRONAGE OF S. MATTHEW'S.

Concessio per Regem Hen. viii. Thome Wolsey Cardinali Ebor' Archiepō facta de patronatu ecclesie Sancti Mathei apud Gipwicum; nec non licentia Collegio Cardinali Gipwici ad eandem appropriand', 29 Julii, anno 20 Hen. viii. [p. 20.]

Litere patentes Henrici octavi Thome Wolsey Cardinali Ebor' Archiepō quod ille advocationem et patronatum ecclesie Sancti Mathei in villā Gippewici appropriare possit Collegio Cardinali Beate Marie in Gippewico, 29 Julii, anno 20 Hen. viii.

Gen. Report from the Commissioners on Pub. Records, p. 21. Pub. 1837.

Grant by H. 8 to Wolsey, A.D. 1532, Sep. 27, among Manors and Advowsons. The advowson of the Rectory of S. Matthew without Ipswich, with the tithes of that Church, and of the Chapel of S. Mary, Ipswich. Gairdners Letters, temp. H. 8., Vol v., 579.

In 1528 Bull for the erection of a College at Ipswich, and it is proposed that certain churches in Ipswich should be appropriated to the same to its support. Rymer Fœdera xiv., 241.

Letters of Hen. 8, Vol. iv., ii., 1862. Pub. 1872.

Draft of a Bull of Clement vii. appropriating to the College the parish Churches of S. Peter and S. Matthew's. A.D. 30 Ap., 1528.

Grant to Wolsey of S. Matthew for Cardinal College.

Lat. Vell. Great Seal attached. Royal miniature and arms, exquisitely tricked in top margin.

Endorsed.

Concessio Regis facta Dño Car^{li} de prõnatu ecclie S. Mathei Gipwici et de licentia eandem appropriandi Collegio car^{lis} gipwici. 29. Julii A^o 20. Hen. 8^{vi}

State Papers, Hen. VIII., A.D. 1528, Vol. IV., p. ii., p. 1997.

*Henricus Octavus Dei gratia Anglie et Francie Rex fidei defensor et dominus hibernie Omnibus ad quos presentes littere peruenerint salutem Sciatis qd nos de gracia nr̄a speciali ac ex certa sciencia et mero motu nr̄is Dedimus et concessimus ac per presentes damus et concedimus pro nob̄ heredibus et successoribus nr̄is Reuerendissimo in christo patri Thome miseratione diuina tituli sancte cecilie trans tibernu sacro sancte Romanę ecclie presbitero Cardinali Eboracę Archiep̄o apostolice sedis legato Necnon felicitis recordationis leonis olim illius nōis pape decimi deinde bone memorie Adriani pape sexti nunc autem sanctissimi domini nr̄i Clementis diuina prouidencia huius nominis pape septimi moderni dicteq; sedis ad nos Regnumq; nostrum Anglie ac omnes et singulas ipiūs regni nr̄i prouincias ciuitates terras atq; loca illi subiecta et alia illi adiacencia ad vitam suam etiam de latere legato Ep̄o Dunolmē exentiq; monasterij sancti Albani commendatario perpetuo dictiq; Regni nr̄i Anglie primati et cancellario nr̄o aduocacionem et patronatum ecclie sancti Mathei in villa Gippewici in Comitatu nr̄o Suff cum omnibus iuribus et pertinencijs suis uersis *habendum* et tenendum eandem aduocacionem et patronatum ecclie predictę cum omnibus suis iuribus et pertinencijs prefato reuerendissimo in christo patri heredibus et assignatis suis imperpetuum absq; compoto seu aliquo alio inde nob̄ hered vel successoribus nr̄is reddendo soluendo seu faciendo *Et Ulterius* nos de gracia nr̄a uberiori ac ex certa sciencia et mero motu nr̄is concessimus et licenciam dedimus ac damus et concedimus pro nob̄ heredibus et successoribus nr̄is per presentes prefato Reuerendissimo in christo patri qd ip̄e heredes executores vel assignati sui dictam eccliam siue rectoriam cum omnibus suis iuribus et pertinencijs decano siue magr̄o et Cardinalis collegio b̄e Marie in Gippewico in comitatu nr̄o Suff de eiusdem reuerendissimi in christo patris fundacione existeñ et successoribus suis appropriare consolidare annectere et unire possit et possint *Et* eisdem decano et collegio et successoribus suis qd ipi eandem eccliam siue rectoriam sic appropriatam consolidatam annexam et unitam cum omnibus suis iuribus et pertinencijs in proprios suos usus here et tenere possint eis et successoribus suis imperpetuum similiter licenciam dedimus et concessimus ac damus et concedimus per presentes specialem *prouiso* semper qd perpetua vicaria in eadem ecclia siue rectoria de uno prebitero idoneo seu pluribus imperpetuum dotetur *Et* qd competens summa inter pauperes parochianos ecclie predictę per ordinarium ibidem in eadem assignand annuatim distribuatur iuxta formam statutorum in huiusmodi casu prouis (proviso-*

rum) Statuto de terrā et teñ (tenementis) ad manum mortuam non ponend (dis) aut aliquo statuto actu ordinatione pruś (provisione) vel restriccionē incontrarium inde fact(o) edit(o) seu ordinat(o) non obstān (te) et absq aliquo bri (brevis) siue mandato de ad quod dampnum seu aliquo alio bri (brevis) mandato seu warranto nrō heredum et successorum nrorum (nostrorum) pro premissis vel aliquo premissorum soluendo reddendo vel fiendo *Eo qd expressa mencio de certitudine aut aliquo valore premissorum siue eorum alicuius seu de aliis donis vel concessionibus p nos progenitores vel predecessores nros prefato Reuerendissimo in Christo patri ante hec tempora fact(is) in presentibus minime fact existit aut aliquo statuto actu ordinatione provisione siue restriccionē inde incontrarium edit(is) fact seu prouisiō. Aut aliqua alia re causa vel materia quacumq in aliquo non obstān (tibus) In cuius Rei testimonium has litteras n'ras fieri fecimus patentes Teste me ipso apud Hampton Courte vicesimo nono die Julij Anno Regni nri vicesimo.*
per bre (breve) de priuato sigillo & de dat predca auctoritate parliamenti.
Tayler.

Cardinal's College.

For Thomas Cardinal, Abp. of York.

Licence to found a College in the parish of S. Matthew, in the town of Ipswich, Suff., where the said Cardinal was born, or in any convenient place in the said town, to consist of one dean or master, 12 priests (sacerdotes) 8 clerks & 8 singing boys, & poor scholars, & 13 poor men to pray for the good estate of the King & of the said Cardinal, & for the souls of the said Cardinal's father & mother.

Letters & papers, Hen. 8, 20 Hen. 8, A.D. 1528, Vol. iv., pt. ii., p. 1939.

A Draft of a Bull of Clement VII. exists, dated 30 Ap., A.D. 1528, appropriating to Cardinal Wolsey's College at Ipswich the parish churches of S. Peter, S. Nicholas, S. Mary ad Clavem, S. Clement, and S. Matthew, of Whersted, Cretingham, and Thurlston, Felixstowe, and other places. State Papers, iv., ii. Pub. 1862.

And on June 26, 1528, a grant was made to Wolsey of the perpetual advowson of S. Matthew's, Ipswich, with power to unite it to the college of S. Mary. Pat. 20 H. 8, pt. i., m. 30.

A.D. 1585. *The Valor Ecclesiasticus*, Hen. VIII., Vol. III., p. 449. Pub. 1817.

Liber Regis, by John Bacon, p. 744. Pub. 1786.

Letters and State Papers, H. 8, Vol. VII., A.D. 1534, p. 306.

Thomas Russhe to Cromwell.

I have, as you desired, visited Our Lady's box at Ipswich, & taken a reckoning of the keeper there for wax & other imagery, w^{ch} was never so little. Devotion is decayed, as doth appear by the same, as y^r servant W^m Laurence will inform you. 6 June, A.D. 1534

RETURN FOR THE SURVEY OF CHURCH GOODS, IPSWICH. 6 Edw. 6. A. D. 1552.

Seynt } John Reward and Wythm
Methew's } Goodchylde Churchewardens

Item^d one payer of Challys }
of sylū & pcell Gylte w^t } xij ownē & di
a paten Waying } quart.

Item one Crysmetory of sylū } xiiii ownes iij
Waying } quart.

Item ij Kneppes of sylū waying j owncē ij quart^s
Item one Cope of Clothe
of Tyssew.

Item one Cope of Black velvett

Item ij Copes of Blew
velvett for Rector of ye quere

Item one Cope of Crymseñ velvett.

Vide in Rotulo sequente pro residuo parochie Sancti Mathei

Edward Grymeston Willm Forster
By me John Holland. by me Mathew Goodechurch

Ad huc de parochia Sancti Mathei.

Item one vestyment of Redde

Tynsell velvett w^t a Crosse
of Golde one the Back

Item one vestyment of Black velvett

Item one vestement of Clothe of Tyssew

Item afore alter Clothe of Redde &

Grene satten of Bredges

Item Bell in the Stepyll iij

Item Sanctus Bell j

Leyd owt by the seyd Churchewardens
w^t the assent of the hole pysshe in
Repacons doñ in & uppon the seyd
Churche in the ij^{de}, iij^{de} iij & 5 yeer of
or seyd souaygne lorde in Glasyng of the
Churche wyndowes and Broken w^t the
great tempaste of hayle & in ledyng &
Tyling & other Necessary repacons the
some of vij^{li} of the whiche they desyer
to be allowed.

vij^{li}

WILLS OF PARISHIONERS:

PROVED AT IPSWICH.

TESTAMENTUM RICARDI FFLEG DE GIPPCO. A.D. 1439.

In dei nomine Amen xxv^o die mens Junij Anno dni millo ccccxxxix Ego Ric ffleg de poch sanct¹ Mathei de Gipp^{co}. sane ments et bone memorie condo testa^{tum} meū in hunc modū In βmis commendo anam meā deo opōtenti bte marie virgini gliōse & omūbs sancts corpusq meū ad sepelliend in cimiterio ecclie poch sancti Mathei p̄dict. Itm lego sumo altari eiusdem p x^s oblits & ignorat solut xx^d. It lego fabrie eiusd ecclie xlj^d. It lego clico poch xija. It volo ut Agnes ux mea heat tement meū cū omnbs ptinens in poch sancti Georgij martyris sittuam ad terminū vite sue Et post decess dictē Agnet volo qd. &c. (f. 3.)

A.D. 1439. In dei noie Amen xxvij die mensis Septembr anno dni Millimo cccc Tricesimo nono. Ego Ricus Deer de Gipp^{co}. sane ments & bone memorie existens condo testamentū meū in hunc modū In primis commendo aiam meā deo omnipotenti bte Marie Virgini rliose & omnibs sancts corpusq meū ad sepellien in cimitio ecclie poch sti Mathei de eadem Itm lego summo altari eiusd ecclie p decimis oblits & male decimats vjs viij^d Itm lego Johi Crewe clico pochi xij^d Itm lego ad reparacoem & emendat dicte ecclie xl^s Itm lego cuilibt ordinis frm (fratrum) Gipp^{ci}. v^d. Itm lego ad fabricacoem cuiusdm pontis vocat Hertford breggs iacem int Blakenhm & Cleydn xx^s. Residm vero omū bonoñ meor do & lego Alicie ux mee. Odo Berkek & Johi Cole quos ordino facio & constituo meos fideles exec. (f. 4.)

A.D. 1444. In dei noie Amen x die mens Octobr anno dni millo ccccxluiij Ego Willm Hakon de Gippe^{co}. condo testm meū. In βm lego anam mea deo oipotenti bte Mē Virgini & oibs scis corpusq meū ad sepeliend in ecclia frm Carmelit ville Gipp^{ci}. (f. 9.)

A.D. 1444. In dei noē Amen Ego Edmndi Bercok de Gipp^{co}. in festi sci Marci Evangle Anno dni millo ccccxluiij sane ac compos ments mee existens meu testm condo in hunc mod In p̄mis lego anmā mea deo opotenti bte Marie & oibs scis corpusq meū ad sepeliend in ecclia pochi sti Mathi iux^{ta} fontē. Itm lego sumo altari ecclie p̄dcte vjs viij^d. Itm lego cuilibt Capello ad exeqm meas existen viij^d. Itm lego Johi Crewe clico poch. v. ij^s. (f. 15.)

A.D. 1447. In dei nom Ann Anno dni millimo cccc quadragesimo septimo Ego Johes Hasard, sane ments & bone memorie existens, condo testm meū in hunc modum. In βmis commdo anā meā deo omnipotenti bee Mæ virgin gloriose & omnbs sanctis corpusq meū ad sepeliend incimitro pochi sancti Mathei Gippe^{ci} p̄dcti Itm lego summo Altari eiusd ecclie p decis oblits vjs viij^d Itm lego Clico pochi eiusd iijja. Itm lego cuilibt domini fratrū Gippeci x^s. (f. 56.)

A.D. 1448. In dei Noie Amen Ego Ricus Rendlesham de Gippewico xxvij die mens marcii Anno dni millimo ccccxlviij sanus ac compos ments mee existens meū testm condo in hūc modū In primo lego anam meā deo pri opotenti bte mē Virgini & omnibs sancts corpusq meu ad

sepeliend in cimiter ex pte aquilon ecclie poch *sci Mathi* Gippewic p'dict. Itm lego sumo altari eiusdem vj viij Itm lego dño Rēctori ecclie eiusdem. (f. 71.)

A.D. 1453. In dei nomine Amen Ego *Johanna Turnor* de Gippewic Tercio decimo die meus Aprilis Anno dni millio ccclij sana ments & bene memorie condo testm meu in hunc modū In βmis comendo Aiam mea deo oipotenti Beat me virg & omibs scis corpus q meū ad sepeliend in Cimiterio ecclie pochiali *Sci Mathe*. Itm lego sumo Altari eiusd ijs Itm lego cuilibet capellano in die sepultur mee ad exequa existent iij^d. (f. 176. b.)

A.D. 1458. In dei noie Amen Ego *Walter Velevet* de Gippewic Norwic dioc iij die mensis Januar Anno dni millio ccclvij compos ments sane q memorie condo & dispono testamentū meū in hunc modū In p'mis lego & comendo anam meā deo opotenti bte M^e virgin gliose ac omibs sancts corpus q meū ad sepell in Cimitero ecclie *sci Matthei* ville Gippewic Primis Sumo Altari p decim meis oblits &c lego vjs viij^d Itm lego *Johi Baker* Clico pochū eiusd ecc xx^d. Prov. at Ipswich 20 May. 1459. (f. 15.)

A.D. 1459. In dei noie Amen Ego *Ricardus Baker* de Gippewicū decimo die mens August Anno dni millimo ccclix sane ments & bone memorie cōde testm meū in hunc mod In βmis comendo Anam meā deo opotenti bte marie virgi et omibs scis corpus q meū ad sepeliend in cimitero ecclie pochl *sci Mathei* Apli Gippewici p'dict. Itm lego ad emedacoe dce ecclie xij^s viij^d It lego ecclie *sci Clements* vj^s viij^d It lego p duobs trentalibs ad celebrand p anā et aiābs om bnfactor meor xx^s. Prob. Apud Gippewic &c (II. f. 157.)

A.D. 1464. In dei &c *Willm Lowder*—sumo altari—It repacon dce ecclie iij^s iij^d (f. 208.)

A.D. 1465. In dei noe Amen nono die mens Octobr Anno dni millimo, ccclxiij Ego *Maryann Lovell* condo testm meū in hunc mod In prmīs comēdo Aiam mea deo omīpot bte Me virgini & omībs scīs corpusq meū ad sepeliend in ecclia *sci Mathei* Gippewici Sumo Altari p decimis meis oblits lego iij^s iij^d. It lego eiusd ecclie xx^s Itm lego *Gilde sci Georgij* ijs iij^d Item pictur Imagine ste Marie le pety xij^d. It volo habēr unū ydoneū psbitū ad celebrand p ana mea & aiab Alicie & Elianor uxor meōr. Prob. xxij Apilis 1465. (II. f. 124.)

A.D. 1468. In dei noie Amen die Jovis piā post festu Purificacois btē marie virgin Anno dni millio ccclxv apud Akenham iux Gippewicū Ego *Thomas Heryng* filius Thome Heryng de Gippewico p'dca apud Akenhm sanus mentē & memoria condo testamentū meū modo & forma subsequen videlt In primis lego anam mea deo omīpotenti btē marie virgini gens &c corpusq meū ad sepeliend in cimetro ecclie *sci Mathei* de Gippewic iux tumulu mātris mee Itm lego ad emendacoem eiusdem ecclie iij^s iij^d Itm lego sumo Altari ecclie de *Akenhm* p'dca p decimis necligent vel ingnorant omīs in recompensacoem xij^s iij^d Itm lego ad facturi unius *candebem* in eadem ecclia faciend vj viij^d Itm lego sumo altari de *Henley* iij^s iij^d Itm volo q^d *Thomas Heryng* pater meus post solucoem. (Will sideways.) (II. 159.)

A.D. 1474. In dei &c Amen Ego *Johna* ux Robt *Hill* que fuit uxor sepeliend in cimiterio eccl *sci Mathei* Gippewici Itm lego sumo altari eiusdem ecclie unū parum lni voc au autercloth Itm lego altari ecclie de *Culpho* alme Autercloth. Itm lego Thome peddar capellano &c. Itm do *tabnaclo sacramenti Altars* ī ecclia *sci Mathei* Gippewici voc *le Canape* una petra Triact (?). Prob. 20 Jan. 1474. (f. 287. b.)

A.D. 1477. In dei, die marts px ante festū *sci Georgii* martyr Anno dni millimo quadringentesimo septuagesimo septimo Ego *Johannes Lakford* dei Gippewico sana mente bona memoria condo testū In p'mis lego corpus ad sepeliend in cimiterio *ecclie Mathei*. Itm lego sumo altari eiusdem ecclie xij^d. Prov. 21 May 1477. (f. 316. b.)

A.D. 1478. In dei noie Amen the xxviii of November ye yere of our Lord mcccclxxviii I *John Campion* of Episwich beying in good mende make my testement in this manner first I bequethe mye soule to God Almighty our lady seynte marie and to all ye seynts in heuene and myn body to be beryed in ye cherche of *Seynte Mathew* by Isabell myn wiff Also I beqweth to her awter of ye seid Churche for myn tithes forgetyn iij^s iiii^d Also I bequethe to parish Clerk of the same Church iiii^d Also I bequeth to the repacoē of ye said Churche iiii mrks to be paid in four yeres. Also I bequeth to ye *whight ffriers* x^s tents &c to be sold and to have a prest to synge for me and myn ffrinds an hool year in the church of Saynt Mathew aforesaid. Prob. 24 Nov. 1478. (f. 319.)

A.D. 1483. In the name of the blysed trinyte fadyr & son & holy gost and off owyr blyssed lady seynt Mary and off all ye holy ye copny of hevyn. I *John Therry* in good & hole mend being 4 March 1483 &c body to be beryd in ye chrch of ye blyssed apost *seynt Mathei* of Gypswich, also I bequeth to ye hey altar of ye seyde chyrch for recompense of my tythys and oblacions viij^d I bequeth to wards ye bying off ye grete belle off the seyde Chyrch xx^d, also I bequeth to a pryste ffor to seyng for my soul in ye seyde chyrch off *Seynte Mathew* x^s. (111. 38.)

A.D. 1479. In dei noie Amen Ego *Willmus Bele* de Gipp condo & dispono test meū in hunc mod. Inprimis lego aīam meā Deo & corpus sepeliend corā *altare ste Katinae* in Ecclia sti *Mathei* Apli Gipp ad suū altar lego pro xis meis oblits xij^d (Fol. 48.)

A.D. 1487. In dei noie Amen xxj die mensis Octob An^o dni millo ccccclxxxvij Ego *Wyllms Prynt* sane ments and bone memorie existens condo testamentū meū in hunc mod. In primis lego aniam meā deo pri omnipotenti be marie Virgini & omibus scis corpus q meū sepeliend in Cimitro ecclie *sci Mathei*. Itm lego summo altari p decis meis oblit ij^s. Itm lego gilde *sci Erasmi* xx^d Itm lego fabrice torchūa. (111. f. 52.)

A.D. 1487. Ego *Ric Gardyner* de Gipp^o compos ments xxviii Nov. A.D. mcccclxxxvij In noiē dei Amen &c Itm lego ad altar ecclie *sci Mathei* xx^d lego ad eccliam *sci Mathei* ij^s vj^d for a *rochett*. (111. 64 a slip)

A.D. 1491. In dei noie Amen I *Robert Duncke* off ye pyshe of *Seynt Matthewys* Ypswyche xxiiii Novemb 1491. In primis I bequethe my sowle to godd Almyghty. (f. 159.)

A.D. 1494. In dei noie Amē the iiijth day off Apryll In the yer of owre lord mccccxxxiiij I *John Mey* off ye prysh off seynt Mathew of Yppswych being in gode moē make my testamet in thys wysse In pmis I beqwethe my sowle to Almyghty godd & my body to be beryyd in ye chyrch yerd off ye same pysh Itm I beqwethe to the hye Awt off ye same chyrch for my tithes & offeryngs forgetyn xij^d Itm I beqwethe to ye hye Awt off *Whytton* xij^d Itm to ye hye Awtr off ye chyrche off *Bramford* xij^d Itm I beqwethe to ye peynting of ye *Candylbeme* in seynt *Mathewys* chyrche whan the begyn to work xiiij^s iiij^d Itm I beqwethe to John Meye my son my place in Whytton w^t all lands belonging therto in ye seyde town of Whytton and Bramford, &c Itm beqwethe to Margary my wyffe the place y^t she dwelleth in lying in psh of Seynte Mathew.

Probat Gipp vicesimo vto die Aplis Annō dni. (iii. f. 158. b.)

A.D. 1501. In dei noiē Amen The yere of our lord mcccc the xjth daye of Januarye I *John Rychys* w^t good and hoole mynde make my testament & last will under this forme first I bequeth my soule unto allmyghty God and to our lady saynt Marye & to all the blessed saynts in hevyn and my body to be buryed in saynt *Mathewe* chereyard of Ippswich Also I bequeth to the heye Awtr of the sayd cherch for tythes and other oblacons forgotten xx^d Also I bequeth to the sustentacon of the gilde of saynt *Erasmus* xx^d The Residue of all my godds I bequeth to Isabell my wyf And I make her myn executrix ownlye. Whereof these men be wittenesse Syr *John Debynhm* my *goostlye* fader, Robt Cooke, Willm Barker and othre.

Probatum fuit ultimo die mens Marcij Anno dni millmo Quingentesimo primo. (iv. f. 1.)

A.D. 1501. In dei noiē Amen the xx day of the monyth of ffebruary in the yere of our lord god a mcccc I *Richard Cavdell* of Ippswich in the parish of saynt *Mathewe* &c my soul to Almighty god to our lady saynt Marye & my body to be buryed in the church yerd of saynt Mathews aforesaid. Itm I besette to the heye Awtēr of this same Cherch for my tithes obliis and not truly paid vj^d, to Cecely my wiff. Prov. scdo Aprilis mcccc primo. (iv. b.)

A.D. 1503. In the name of god Amen the xviiij day of Decembr mcccc & iij I *John Kyng* of Ippwych in the pysh off Saynt Mathewes w^t an hoole mynd & a clere costyens begynne to make my will &c my soule to Almighty god to our lady Saynt Mary Virgyn & to all the saynts off heven & my body to be buryed in the cherch yerd of Saynt Mathews aforsayd. Itm I bequeth to the beygh Awter off the same Cherch ffor my tythes & offeryngs neglyently paid xij^d.

Prob. xx Jan. m.ccccij. (iv. 118. b.)

A.D. 1503. In the name off god Amen the first day of August in the yer of our lord god mcccc & iij I *Agnes Reynold* off Ipswich in the pysh of Saynt Mathews &c I sett & recommend my soule to Almighty god to our lady Saynt Mary & to all the saynts off heven &c my body to

be buried in the cherchyard of S. Mathews Itm I bequeth to the heye awter off the same cherch in restitucon off my oblacons negligently paid xija. I will that eny þste beyng at my buryeng have iiij^d & eūy clerk beyng a man to have ijd. Itm I bequeth to the repacon off the cherch off Saynt Mathews aforsayd xiijs iiij^d. Itm I bequeth to a secular a p̄st to syng ffor my soule my ffaders & my mothers in the cherch off saynt Mathews aforsayd by the space of a hoole yer viij marc vjs viij^d. Itm I bequeth to a man to go to the holy courte of Rome in *Pylgrymage* ffor my soule my ffathers & mothers and he to have ffor his labour xli off lawfull mony off the goods that my ffather bequethed me And yf my brother John Kyng will take upon hym the holy pylgrymage than he ffor to haue it befor all other men. Itm I bequeth xl & off the good that my ffather bequethed me ffor to haue a C masses songe upon a day ffor my soule my ffathers & my mothers. Itm I bequeth to the *Grey ffriers* In Ipswich off the goods that my ffather bequethed me xiiij & iiij^d to pray ffor my soule my ffathers & mothers. Itm I bequeth to the *Whyght ffryers* off the same vjs viij^d Itm I bequeth to the *blak ffriers* of the sayd town off Ipswich vjs viij^d.

Prob. 23 August 1503. (iv. f. 205. b.)

A.D. 1506. In dei noie Amen In Viglia Assuponē blē Marie Vginis Anno dni millimo ccccc sexto I *Willm Sharpe* off the parish of Seynt Mathew in Ippiswich beyng hooll in mynde & of good memorie in this manner of wise ordeyne & make my last will In p̄mis I bequeth my soule to our lord Jhu Criste & to his blessed moder seynte Marie & to alle the holy cōpany of heven my body to be buried in the chirche yerd of seynt Mathew be for seid, Itm I beqwethe to the hye Awter of the same for tythes forgotyn xl^d. Itm I beqweth to the *Gilde of Saynt Herasmus* xx^d. Itm I will that ther be seid at the daye of my beryeing of good & honest prests v messis and like wise at the xxx^{ti} daye other v messis and ther to have for ther labor accordyng eury prest iiij^d. Itm I will at the day of my beryeing that ther be ordeyned in bred for to be deld to the pore peple that comyth & also in vituale to the refresshyng of my pore neybars to ye valew of x^s. Itm I beqwethe to the *high awter* of ye seid Seynt Mathewes a cloth to be maed An awter cloth and alle other my goods movabill and unmovabill I geve to Jone my wiff myn executrix witness the foure Sir *John Mastir* my *gostly ffader* & *curatt* of the same. &c.

Prob. 20 August 1506. (iv. f. 225. b.)

A.D. 1509. In dei noie Amen the xv day of Januarij the yer of our Lord mcccccxix I *John Crosse* of the pysh of Saynt Mathews in Ippiswich hoole of mynde & in p̄fyght memorye by gods uysitacon dyseased w^t infirmytees for ye discharge of my selff both in body & soule ffyrst agayn god & secondary the world in this man wyse make my testament ffyrst I bequeth my soule to our lord Jhu Cryst to his blissed moder Saynt Mary & to all the holy cōpany of heven, my body to be buried w^t in the cherchyard of the said saynt Mathews Also I bequeth to the *heye awter* of the said Cherch for tythes neglygently forgotten ij. Prob. xx March 1509. (v. f. 113.)

A.D. 1516. In the Name off God Amen the vj day of Septebr the yer of oure lord god mccccxvi I *Willm Waade* off the pyshe of Seynt Mathewe off gypsweche in the dioc off Norwich hole off mynd and prfyte memorie beyng but not in helth off body ordeyne and make this my testamt and last will ffyrst I bequeth my Sowle to Almighty God, to the Virgyn Mary and to all the holy company off hevyn and my body to be buryd in the Este ende off the churcheyard off Seynt Mathew forseyde. Itm I geve & bequeth to the high awtere off Seynt Mathew for my tythes and oblacons forgotyn & not payd xl^d. Itm I wyll have an *ymage off the vytte*? (Passion)? off our lord made howsede peynted & sett upp at the Este ende of Seynt Mathew whereas my body shall lye. (f. 151.)

A.D. 1520. In the name of god Amen the viij daie of Noueb in the yere of our lord god mccccxx I *Willm Dawis* of the parish of saynt Mathewe the Apostell & Evangeliste in Ipswich, and in the diocese of Norwich hool of mynde &c. to be buried in the cherch of *saynt Mathewe* in Ipswich Itm I bequeth to the high *Aulter* of the same cherche for my tithes and oblacons negligentlie forgotten iij^s iij^d. Itm I geve to the said cherch vjs viij Itm-I geve and bequeth to the gilde of saynt Erasmus iij^s iij^d. Itm I geve to eury oon of the *housis of ffryers* in Ipswich to pray for me and min freinds xx^d. Itm I will haue an honest secular priest to sing for me and my frendys and all cristin soulys in the cherche of Saynt Mathewe in Ipswich aforesaid by the space of oon hoole yere and he to have for his stipend of that yere vj^{li} starling. Item I geve to my *goostlie ffather* Sir *John Master* to pray for me and for all cristen soulys xx^d. Elyne my wiff executrix.

Witness this my present Will *Sir John Master* Curatt of the parish of saynt Mattheue.

Prob. at Ipswich xv November mccccxx. (vi. f. 67. b.)

A.D. 1532. In the name of God Amen I *Thomas Cutting* of saynt Matthew parysh in Ipswich in the diocese of Norwich ffremason hooll of mynde and good of remembraunce being the xxviij day of februarye in the yere of our lorde god mccccxxij do ordeyne and make this my present testament &c. ffirst I comende and bequeth my soule to allmyghty god to our ladye saynt Marye and to all the saynts in hevyn and my bodye to be buryed in the cherch of the said parysh of saynt Mathewe by my Wyff *Emme* ther as she lyeth buryed. To the which *highe Aulter* of the said parish cherche for my tythes and offerynggs for goten and negligentlie umpaid I bequeth ijs. Item I bequeth to the said parish cherch for brekyng up of the grownd there as my bodye shalbe buryed js viij^d. Item I geve & bequeth to *Alys* my wyff all my stuff of household and all other my moveable gooddys to hir own ppr use she to bryng me honestlie to the ground at my burreng day &c. Gregorye my son, Thomas my son. These witnesses present at this my said testament M. *Richarde Sparhawke* my Curate, William Gregory *Jamys Crowferde* priest. Probatum apud Gipp coram nobis xxvij die mensis Septembr Anno dñi Millmo cccccxxii (xi. f. 53.)

A.D. 1539. In the name of God Amen In the yere of our Lord god mccccxxxviiij I *Alexandre Sparhawke* dwelling in the pische of saynt Mathew Ipswich in the countie of Suff, & do make this my last will the xv day of Septembr in the yere xxx^{ti} yere of the Reigne of or. souayne lord kyng Henry the viij Supreme hede of the cherch of Inglonde in manñ & forme folowyng ffyrst I bequeth my soule to Allmyghtie god & to or Lady saynt Mary & to all the companie of Sayntts in hevyn my body to be buryed in the *Chapell* of Saynt *Erasmus* by my ffyrst wiff and I gif & bequeth unto the high Aulter of the cherch of *Saynt Mathew* for my tythes negligentye forgotten xxa Also I bequeth unto the making of a *parclose* wt in the said *chappell* of *saynt Erasmus* xx^s Also I will have an honest secular pryst to syng for me & my wiff & all my good ffrynds soulls in the same Chappell the space of half a yere & he to have for hys stipend iij^l iij^s iij^d Also I gif unto saynt *Erasmus Aulter* a cloth off dyaper Also I gif & bequeth to John Norman my son iij^s. Also I will that my executōs shall honestlye bryng me to the grownde and I bequeth unto my brother Thomas dwelling in London in the pische of saynt Gylys wt out Crepyll gate a fetherbede wt a bolster & a couyng & my pnk clothe gown lyned with Blake coony a Jakett of Chamblett & my best hosys and I gif to Kateryne *Umfrey* my doughter all my other Londs, hir husbond Willm Humfrey.

In wyttenes of this my last will *Syr Richarde Alyn Curate of the pische.*
 Probatum xxj Aplis Ano dni millmo quingen^{mo} xxx^{mo} nono.
 (XIII. f. 107.)

A.D. 1545. In the name of god Amen the xij daye of July in the yere of or Lord god mccccxliiiij^{li} & in 36 of Henry viij I *John Heyron* of Ippeswich, in Suff. yeman hole of mynd I bequeth my Soule to Almightye god the ffather & to his onelye son Jhus Cryst or Lord and to the hoolye goost three psons & oon god And my body to be buryed in Crytyan buryall whersone^r yt shall please the Lord to call or take me out of this vale of mysery Item I gif to the repacoñ of the prishe cherch of *saynt Mathews* in Ippeswiche aforsaid xx^s sterling, Item to the poore at the day of my buryall, Margarett my wyf. Probatum 5 May, 1545. (xv. f. 76.)

A.D. 1545. In the name of god Amen 4 Feb. 1544 I *Roger Hayward* of Ippeswich, Sherman ffyrst I comend my soule unto hands of Almightye god the ffather the son & the hoolye gost three psons & oon god my creator & redeñ and my bodye to be buryed in the cherche yard of *saynt Mathews* pisshe of Ippeswiche Item I bequethe to the repacoñ of the said cherche x^s Margaret my wyf, Roger Hayward my son. Witness *John ffowler Curate of the said pische* of Saynt Mathews. Prob. 5 May 1545. (xv. f. 77.)

A.D. 1545. In the name &c xx June mccccxlv I *Margarett Heyron* wedowe, my sowle to god & three psons & oon god; my bodye to be buryed wyth in the cherche of saynt Mathews Th appostle of Ippeswych. Item I bequeth to the repacoñ of the saide Cherche xx^s. Item I gif to

John ffowler Clerke Curate of the said pisshe of saynt Mathews vjs viij^d in mony & a m^l of Byllettis.

Prob. xij Oct. Annodni millo Quingen^{mo} quadra^{mo} Quinto. (xv. f. 116.)

A.D. 1547. In the name &c. 8 July 1546 I *Elyzabeth Smythe* of Ippyswiche widowe my Soule to Allmyghtie god to or blyssed Ladye the Virgen, and to all holye compane of heaven And my bodye to be buried in Saint *Mathews* pÿshe in yppyswich And I bequeath to the *highe Aultar* of the saide church for my Tyths fforgotten iij^s iij^d Itm I bequeathe to the Town of yppyswiche xx^s to repare the hyghe waye between *Born Brydge* & Ippyswiche, And I gyve to *Wrabnes* some to repayre the high wayes between *Wrabness* & *Romsey bredge*. Itm I gyve to ten poore maydens *maryage* in the pyshe of Sainte Mathews xx^s that is ij a pece, to ten poore maydens maryage w^t in the Towne of *harwich* lykewyse ij^s a pece And also I will y^t ther be a Dirige & masse saide, to Laude God, and praye for all xpën soules, and there to be gyven to the priest & clarks & to the chyldren vjs viij^d.

Witness *John ffowler Clerk Curate* of the saide pyshe of Saint Mathew's. M this ys hyr handtoken 18 Octobr. 1547. (xv. f. 330.)

A.D. 1547. In the name &c. 4 Jan. 1547, I Edw. sixte I *Miles Waller* of Yppyswhiche, Clothemaker, I comende my soule into thandes of Allmyghtie god the father the sonne, and tholy ghooste, three psons and one god, my creator Redemer and gouvernour, to be buried in churchyard, to Miles Rose my godsonne x^s. Alice my wief sole ex.

Witness *John ffowler, Clarke*. Proved 9 March 1547. (xv. f. 364.)

CHURCH NOTES BY DAVY. JUNE 17, 1824.

The Church consists of a Nave, Chancel, and two Isles.

The Chancel is 33 feet long, and 21 feet wide, covered with tiles, but not ceiled. The Communion Table is raised one step, and railed round. The Lord's Prayer, Belief, and Commandments are painted on a frame, which is fixed over the Table. The E. window is large, handsome, in the perpendicular style, but with numerous mullions in the upper part: no painted glass remains. The following hatchments hang here.

1. On the N. wall.

Innes, Arg. in chief, 3 mullets, sa. on an inescutcheon of pretence; Or, a human heart, gu. behind it, (and thrust through it) 2 swords in saltire argt. hilts. or a cinquefoil gu. Crest, An arm in armour erect ppr. holding a sword arg. hilted or. Supporters, Two Greyhounds, arg.

Below hangs the badge of the Barts of Nova Scotia. On a scutcheon arg. of the arms of Scotland, and encircled with the motto, Fax mentis honestæ gloria. The whole sa. This was for Sir William Innes, Bart., who lies buried in a Vault, in the churchyard.

2. At the East end of the North side.
Hodges. Or. 3 crescents sa. on a canton of the 2^d. a ducal coronet of the 1st impaling Peacock. Gu. on a fess arg. bet. 3 bezants, each charged with a peacock's head erased az. 3 mascals pierced sa. Crest, on a ducal coronet, or, a crescent sa. Dexter side sa.
3. On the E. end, S. side.
Peacock. As the last, but the field, az. Impaling Osborne? sa. billettée, a griffin segreant, or. Crest, between 2 wings expanded, a peacock's head erased, holding in the beak a snake coiled round the neck of the peacock; the whole is of a light blue. Motto, Virtus in actione consistit. Whole sa.
4. On the S. side over the door.
This and the 3 following are placed together in a lozenge. How, Lord Chedworth, Or. a fesse between 3 wolves heads, coupéd, sa. Crest, a dexter arm in armour, erased at the elbow, lying fess ways, and holding in the hand a scimiter erect, enfiled with a boar's head coupéd, all proper. Supporters. On the dexter side a lion arg. pelletée: on the sinister an angel proper, face profile, habited crimson, the under garment az, the wings arg. pinioned az. Motto. Justus & propositi tenax. Whole sa. This for John L^d. Chedworth, who lies buried in a Vault in the churchyard.
5. Milner. Sa. a chev. between 3 (bridle) bits, or impaling Arg. a chev. vert, betw. 3 bugle horns stringed, sa. Crest. a demi lion ramp^t. sa. holding in his dexter paw, a bridle bit, or. Dexter side sa.
6. Milner, as above, impaling Or. fretty, sa. on a chief of the last, 3 plates. Crest as the last. Sinister side sa.
7. Curzon. Arg. on a bend sa. 3 popinjays, or, a ring round their necks, gu. impaling Arg. a chev. gu. betw. 3 bugle horns az. stringed or. Sinister side sa.

On the S. side of the Chancel, are some ancient seats of oak, on that part of it which is against the wall there is this inscription in black letter, *John : Smyth : Pewterer : which : decessed : ye : xvij : day : of : May : ye yere of : or Lord God, mccccxvj.*

On the cornice of the roof, on the N. side, there is a row of tenter hooks: but for what purpose I cannot conjecture.

The Nave is 55 ft. 10 in. long and 21 ft. 5 in wide, covered with tiles and ceiled.

The Pulpit stands in the N.E. corner, octagon, ordinary, painted. In the N.E. angle, may be seen traces of the passage to the rood loft.

The Nave is separated from the Isles, by 4 arches on each side, plain, which are supported by octagon plain pillars.

The pews are uniform and neatly painted yellow: the floor of white panments.

Over the arch at the W. end are the Royal Arms, and at this end is a small Gallery, just above which, on a board is this, Jno. Orford Jos^h. Toosey Churchwardens 1808.

Just below the Gallery, stands the Font, which is small and slender, octagon, of stone; the faces with tabernacle work, and figures, apparently on scripture subjects, but not very obvious ones: and roses: the pedestal has figures supporting it: a large wooden type covers up, which opens with folding doors: the font itself is in good preservation.

There are no clerestory windows, but two modern ones have been opened, one each side near the E. end, to give additional light to that part of the church.

The S. Isle is 54 ft. long, and 11 ft. 11 in. wide, covered with lead: the intersections of the rafters, and the ends of the supporters of them, have carvings on them, some bearing a sort of guitar, another a harp &c. The timber appears to be chesnut.

The N. Isle is 72 ft. 3 in. long, by 12 ft. 3 in. wide, covered with lead; the roof here, is ornamented with carvings similar to that on the S. side: the figures however on this side bear shields before them, which have on them the instruments of our Saviour's Passion, viz: 3 nails, the cross and crown of thorns, the sponge and spear in saltire, 3 scourges, 2 and 1 &c also the emblem of the Trinity.

Near the W. end N. side is a shelf for bread, and over it.

Henry Skynner Gent.

late Portman of this

Town gave to the Poor of

this parish 100 pound for ever.

At the E. end of this Isle, a portion is inclosed as a Vestry.

On the S. side of the S. Isle is a small Porch.

The Steeple is a square Tower of flints, without buttresses, and of no great height.

It contains 5 Bells, which are thus inscribed.

1. Pack & Chapman of London fecit 1772.

2. Miles Graye made me 1605.

3. Sancta Katerina ora pro nobis.

4 & 5. Pack & Chapman of London fecit 1772.

The outside walls are cast over, and having given way outwards, are supported by very massy brick buttresses, particularly on the S. side.

Monumental Inscriptions &c.

In the Chancel.

1. Against the N. wall, very near the East end, is a mural monument of coloured marbles, in the centre are 2 shallow niches, in which are kneeling the figures of a man and woman, having a faldstool between them: the man has a scarlet cloak, with a black dress underneath, a beard and a moderate sized ruff: the woman is also in a black dress, with a kind of veil fixed to the top of her head, and hanging down behind.

Beneath these, on a frieze, are 2 groups of children, kneeling before a faldstool; under the man are 3 sons in black dresses and cloaks: and below the woman, 5 daus. also in black dresses resembling that of their mother. Below these 2 groups, are 2 tablets of dark grey marble,

which are separated by a square piece of white marble on which is carved a festoon of fruit.

On the tablets are inscriptions.*

At the top of the monument, is this coat of Arms.

Cock. Quarterly, Gu., and arg. in the 1st qr a cock or. a crescent for diff^e. Crest, a bird (gy. an ostrich) gu. ducally gorged, and holding in its beak a key, or.

On the sides, just above the top of the niches are

2 shields: dexter side, Cock, as above. Sinister. Arms of Ipswich. Per pale gu. and az. on the dexter a lion ramped or. on the sinister, 3 demi hulks of ships, joined to the impaled line of the last. The whole monument has been handsomely painted and gilt.

2. On the same wall, westward, is another mural monument of marble, consisting of 2 arched niches, with an entablature supported by 3 Ionic pillars. In the niches are two figures kneeling, on the dexter side, a man in a gown with a kind of pudding sleeve, painted scarlet, he has a beard, and a large ruff. On the sinister side, is a woman, also kneeling, dressed in a scarlet gown, with very full puffed sleeves, which are tied in the middle, with a ribbon; a black veil, attached to the top of her head, falls down behind her.

On the frieze below them, are two groups of children; under the man, 9 sons kneeling, in cloaks of different colours, the 3 eldest of which have beards; in front of these are lying 3 children in swaddling clothes, who probably died infants. Under the woman are 4 daughters, also kneeling, and dressed in gowns and puffed sleeves like their mother, and with close black caps tied under their chins: the two middle ones which from their size, appear to have been the second and youngest, hold each a scull in their hands, probably to show that they died young.

On two tablets of black marble, are inscriptions.

At the top of the monument are these Arms:—

Penning. Gu. 3 stags heads cabossed, arg. a chief indented, erm.

Crest, a greyhound's head arg. but quere should be a buck's head erased, p. fesse indented arg. and gu. attired of the last.

At the corners were two shields, that on the dexter side is broken off and lost, that on the sinister side has the arms of Croft: or 3 bulls heads coupéd, sa.

3. On flat stones.

Within the Communion rails, on a dirty looking slab of free stone, in the middle (caps).

Richard Cock, Gent, thrice
Bayliff of this Towne
was here interred 1629,
June 7th
Resurgam.

* See Ipswich Inscriptions, S. Matthew's. Rev. F. Haslewood. 1884.

4. On the south side, within the rails, black marble.

Here resteth the body of Mrs Sarah Peacock &c.

Arms above Peacock. Or a fess bet 3 roundels, each charged with a peacock's head erased, 3 mascles, impaling Osborne (?) Billetty, a griffin segreant. Crest as before.

5. On the North side, within the rails, black marble.

Elizabeth Johannis Dade &c

Arms, above. Morris, a lion passant, bet. 3 scaling ladders, a crescent for difference, impaling Dade, a chev. bet. 3 garbs. Crest a tower.

6. Below the rails, on the South side near the door, lies a blackish stone, diminishing to the feet, but there are no traces of inscription upon it.

7. On the North side of the last another black stone.

Hic jacet J. Frohock &c—nat. 64.

Arms above. Frohock. On a chev. bet. 3 leopards faces, 3 trefoils slipped; above a helmet and torse, but no crest.

8. In the middle of the Chancel, lies a very old Purbeck stone which had brasses, probably covering the remains of Dr. Baily, see page 160.

A blackish stone, which had a brass.

(Other inscriptions all now printed.)

20. Smythier. On a fess bet. 3 fleur de lis, as many trowels. Arms below. Smythier as above impaling Kerrington, on a bend 3 lozenges, in chief a cinquefoil.

21. Behind the Pulpit on a small stone broken (caps)

Here lyeth John

Reaward alias

Harris - - 1581.

22. Old stone had a brass.

In the spandrils of the North door of the Isle are two shields:—The dexter side had the emblem of the Trinity, but nearly defaced: the sinister the instruments of the Passion, the cross, spear, sponge, nails, &c.

In the arch are crowns, and at the bottom of it, a blank shield on each side, on the jambs, roses: the corbels of the drip stone, are lions seiant guardant, crowned. Oct. 1824.

Visited again June 1, 1832. The Church was under repair.

The Vestry which was at the East end of the North Isle, is now removed to a space behind the pillar a little to the W., and the part of the isle where the Vestry formerly was is new pewed, and a stone or two is thereby covered up. Several new pews are made in the chancel; the lower part of the East window re-opened and repaired: and a great part of the Church new pewed.

South aisle. Against the same wall is placed the slab to the memory of Lord Chedworth, which was formerly on the table monument in the Churchyard: it has only a small moulding of white marble at the top, and another at the bottom. Hatchment of Howe over it.

Incorporated Society made a grant 1836. (*Brit. Mag.*, Dec., 1836, p. 740.)

Re-visited 1833, 1840, and 1842.

CHANCEL.

The East window is apparently modern, it is lofty, of wood, of 5 lights with transoms to each light.

The E. window on the S. side is a drop arch of 3 lights with 3 foiled heads.

The W. do. is also of 3 lights, plain.

The Arch to the isle of the Chancel, on N. side, is very sharp pointed.

The Arch to the Nave is an obtuse pointed one, supported by clustered pillars.

NAVE.

The arches to the side isles are equilateral, pillars plain, octagon.

There is no clerestory, but additional light is obtained by 2 windows in the roof, one on each side near the E. end.

A Gallery runs along the N. Isle and across the whole Church at the W. end.

S. ISLE.

The Windows seem to have lately undergone repair: that in the middle has a segmental arch, with a dripstone returned at right angles.

N. ISLE.

The window at the W. end, is triangular headed, dripstone returned.

The N. door is a drop arch with a square head, the dripstone supported by lions seiant crowned: 2 mouldings continued round the arch and down the jambs, without shaft or capital: in the outer moulding are 4 foils, in the inner roses below, and above, a blank shield on each side, and ducal coronets.

1. Wo from W. triangular head, human heads supporting the dripstone.

2 and 3. Segmental arches of 3 lights, no mullions, dripstone returned.

THE STEEPLE.

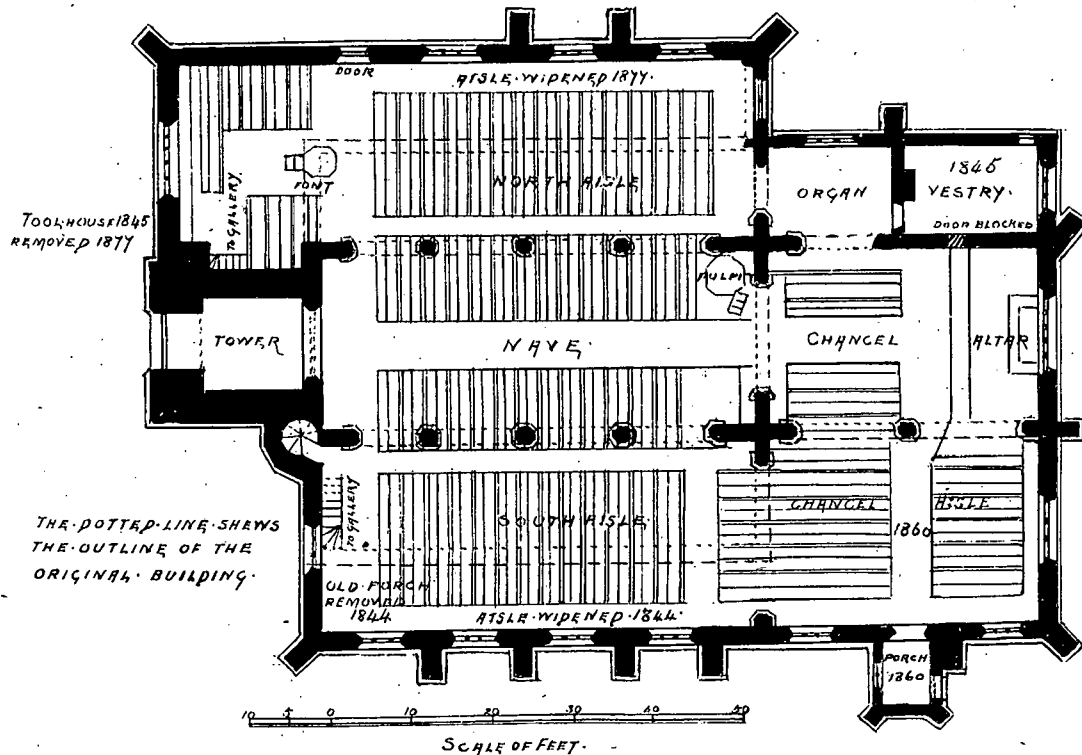
Has no parapet.

The Wo in the W. side is a pointed segment arch, no mullions, of 2 lights, the dripstone returned.

A small one above, a similar shaped arch, with a trefoiled head.

The windows in the Belfry, small, triangular headed, of 2 lights, with 3 foiled heads, a 4 foil in the centre.

(Add. ms. 19,094, II., 82.)



PLAN OF S. MATTHEW'S.